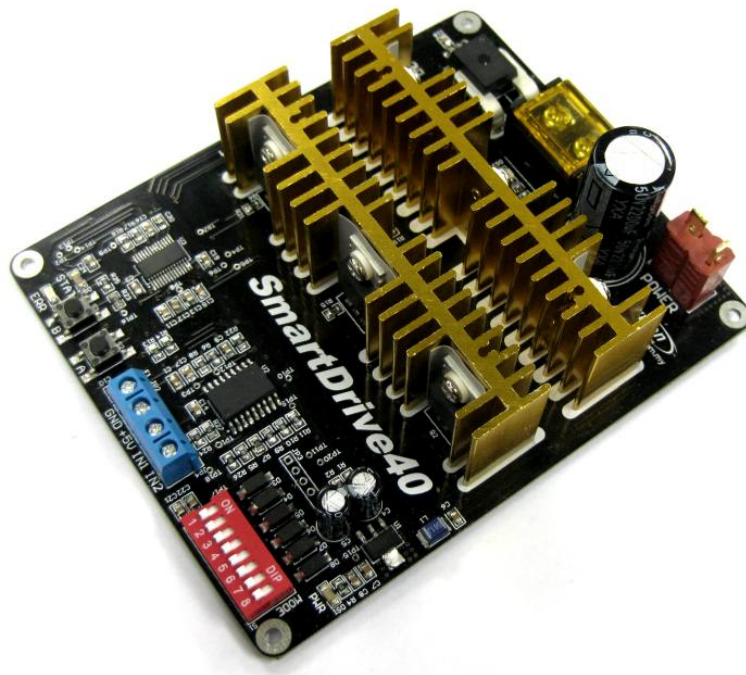


# **Cytron** *Technologies*

## **MDS40A** **SmartDrive40**



## **User's Manual**

**V1.3**

**Aug 2014**

Information contained in this publication regarding device applications and the like is intended through suggestion only and may be superseded by updates. It is your responsibility to ensure that your application meets with your specifications. No representation or warranty is given and no liability is assumed by Cytron Technologies Incorporated with respect to the accuracy or use of such information or infringement of patents or other intellectual property rights arising from such use or otherwise. Use of Cytron Technologies's products as critical components in life support systems is not authorized except with express written approval by Cytron Technologies. No licenses are conveyed, implicitly or otherwise, under any intellectual property rights.

# Index

1.	<a href="#">Introduction and Overview</a>	3
2.	<a href="#">Packing List</a>	4
3.	<a href="#">Product Specifications</a>	5
4.	<a href="#">Board Layout</a>	6
5.	<a href="#">Power Supply</a>	8
6.	<a href="#">Motor Connection</a>	15
7.	<a href="#">Safety Features</a>	19
8.	<a href="#">Input Modes</a>	20
8.1	<a href="#">RC Input Mode</a>	21
8.2	<a href="#">Analog/PWM Input Mode</a>	24
8.3	<a href="#">Simplified Serial Mode</a>	29
8.4	<a href="#">Packetized Serial Mode</a>	30
9.	<a href="#">Warranty</a>	32

## 1.0 INTRODUCTION AND OVERVIEW

[SmartDrive40](#) is one of the latest smart series motor drivers designed to drive medium to high power brushed DC motor with current capacity up to 80A peak and 40A continuously. MOSFETs are switched at 16 KHz to ensure quiet operation and no annoying whining sound. Besides, it also equipped with a microcontroller unit to provide smart features such as multiple input mode, current limiting and thermal protection.

SmartDrive40 can also be hooked up with another similar unit and operates in pair. This make driving a robot with differential drive a truly plug and play experience.

Some of the features for SmartDrive40 are summarized as below:

- Bi-directional control for a single brushed DC motor.
- Support motor from 7V to 25V.
- Maximum current up to 80A peak (1 second), 40A (5 minutes) or 30A (> 20 minutes) continuously.
- 16 KHz switching frequency for quiet operation.
- Reverse polarity protection.
- LiPo battery low voltage warning.
- Thermal protection.
- Current limiting base on temperature.
- Multiple input modes: RC, Analog, PWM, Simplified Serial and Packetized Serial.
- On board push buttons for fast test and manual operation.

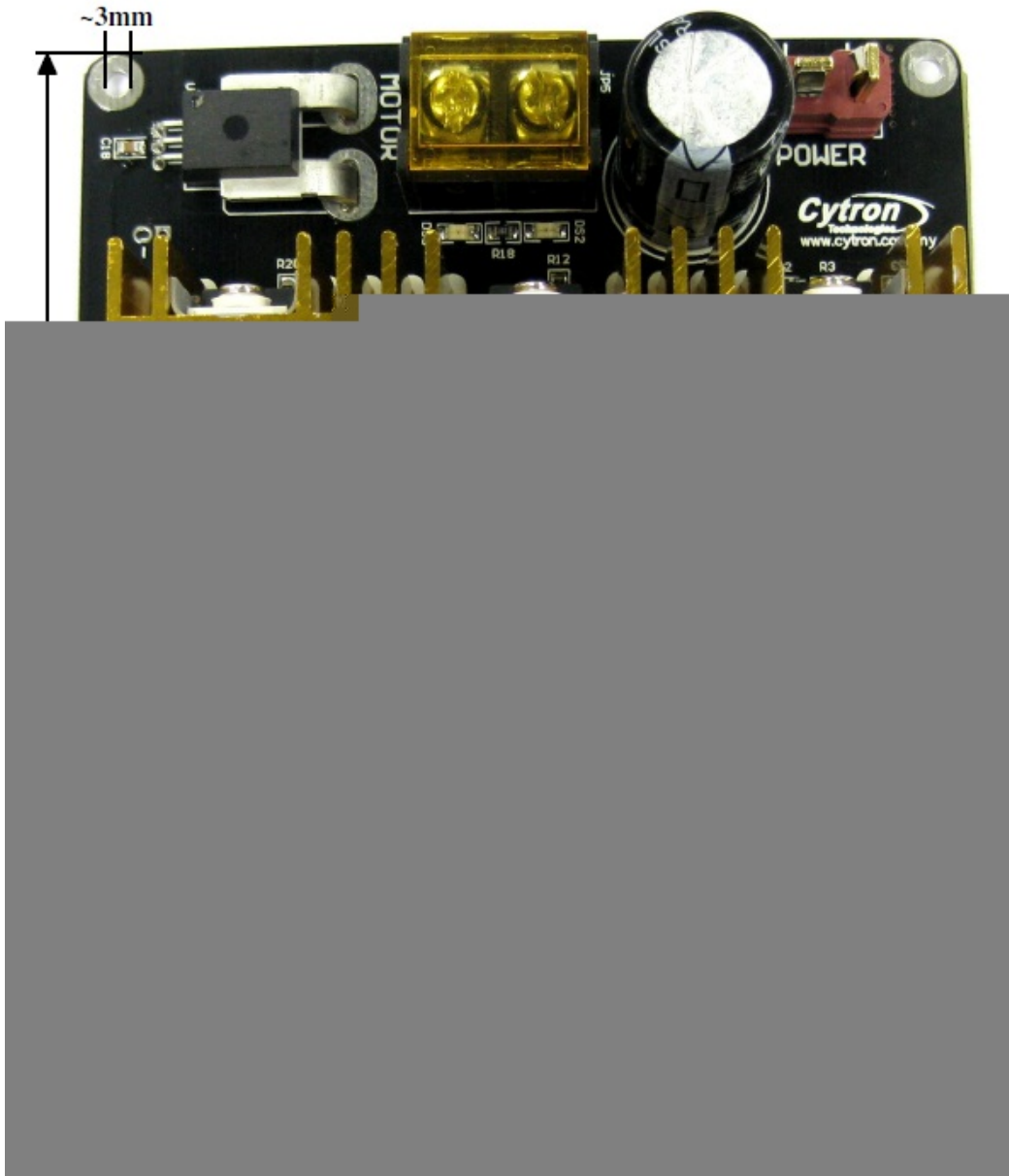
## 2.0 PACKING LIST

Please check the parts and components according to the packing lists. If there are any parts missing, please contact us at [sales@cytron.com.my](mailto:sales@cytron.com.my) immediately.

1. 1 x [MDS40A](#) SmartDrive40
2. 1 x [Dean T Connector](#) (Female)
3. User's manual, and sample source code can be downloaded from <http://www.cytron.com.my>.

### 3.0 PRODUCT SPECIFICATIONS

#### Dimensions



No	Parameters	Min	Typical	Max	Unit
1	Input Voltage (Motor Supply Voltage)	7	-	25	V
2	$I_{MAX}$ (Maximum Continuous Motor Current)*	-	-	40	A
	5 minutes	-	-	30	A
3	$I_{PEAK}$ – (Peak Motor Current) **	-	-	80	A
4	$V_{IOH}$ (Logic Input – High Level) ***	3	-	5.5	V
5	$V_{IOL}$ (Logic Input – Low Level) ***	0	0	0.5	V
6	5V Output Current	-	-	50	mA

\* Depends on the room temperature.

\*\* Must not exceed 1 second.

\*\*\* Not applicable for PWM signal as PWM signal will be converted to analog voltage via low pass filter before processed by the processor.

## 4.0 BOARD LAYOUT

Components on MDS40A and their functions:

1. Dean T Connector (Male) – Connect to power source. For high current application, please solder the wire directly to the pad at bottom layer.
2. LED A – Turns on when the output A is high and output B is low. Indicates the current flows from output A to B.
3. Terminal Block – Connect to motor. Reverse the polarity if the motor direction is incorrect.
4. LED B – Turns on when the output A is low and output B is high. Indicates the current flows from output B to A.
5. LED STAT – Status LED. Turn on when the motor is running. Turn off otherwise.

6. LED ERR – Error LED. The number of blinks is corresponding to the error.

Number of Blinks	Error	Description
Off	No Error	No error has been detected.
2	Input Error	Invalid or no input detected.
3	Lipo Undervoltage	The LiPo battery voltage is too low.
4	Over Current	Over current is detected and current limiting is operating.
5	Over Temperature	The board temperature is too high.
6	MOSFET Driver Error	Error detected by the MOSFET driver.

7. Test Button B – When this button is pressed, current flows from output B to A and motor will turn CCW (or CW depending on the connection).

8. Test Button A – When this button is pressed, current flows from output A to B and motor will turn CW (or CCW depending on the connection).

9. Input

Pin No.	Pin Name	Description
1	IN2	Input channel 2.
2	IN1	Input channel 1.
3	+5V	+5V output. Do not connect to another 5V source.
4	Gnd	Ground.

**Warning:** The +5V output is designed to power the **RC receiver only**. Do not connect any **RC servo** to the RC receiver and do not use the +5V output to power any other circuit.

10. Mode Selection DIP Switch – Used to select the input mode.

11. LED PWR – Power LED. Should be on when the board is powered.

## 5.0 POWER SUPPLY

[SmartDrive40](#) supports input voltage ranges from 7V to 25V. The recommended power sources are:

- 6 – 18 cells NiMH or NiCd battery.
- 2 – 6 cells LiPo or Li-Ion battery.
- 7V – 24V sealed lead acid battery.
- 7V – 24V power supply (**Must be in parallel with a battery with same voltage**).

The power source can be connected to SmartDrive40 either via the Dean-T connector, or soldered directly to the pad at the bottom layer.

### NOTE:

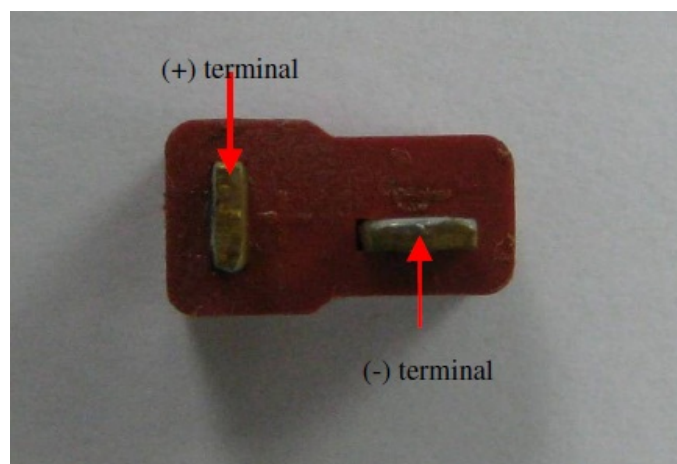
1. If a power supply that cannot sink current is being used (bench top and AC to DC switching power supply), the input voltage will rise when the driver is regenerating (motor is slowing down). Thus, it is important to connect a battery with same voltage in parallel with the power supply to absorb the current generated by the motor. Else, the input voltage might rise to a level where SmartDrive40 will be destroyed permanently.
2. For application where the current is  $> 20A$ , it's recommended to solder the wire directly to the pad at bottom layer.

Steps to solder the wire to the Dean-T connector are shown below:

The items needed to solder wire to [Dean-T connector](#) are:

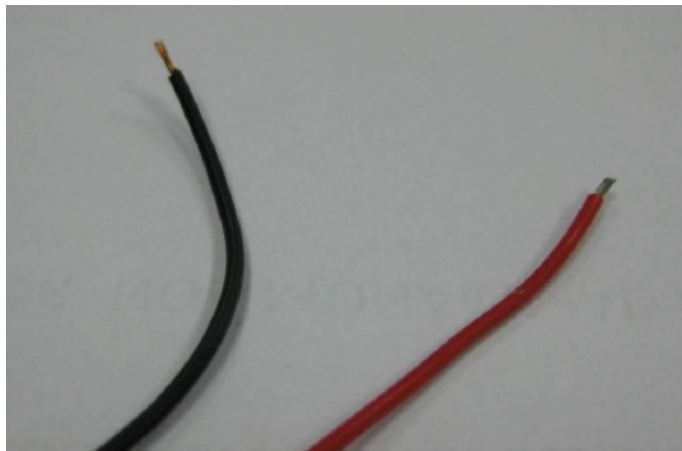
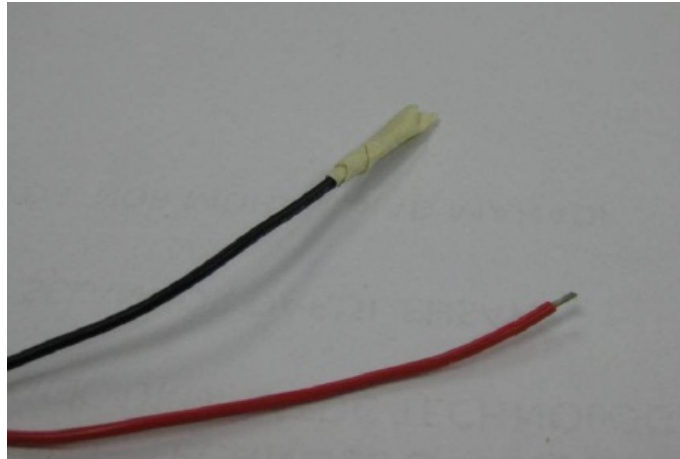
- Wire
- Shrinking tube
- Female Dean-T connector

1. Before start soldering, identify the polarity of Dean-T connector. There are + and – marking on the Dean-T connector.

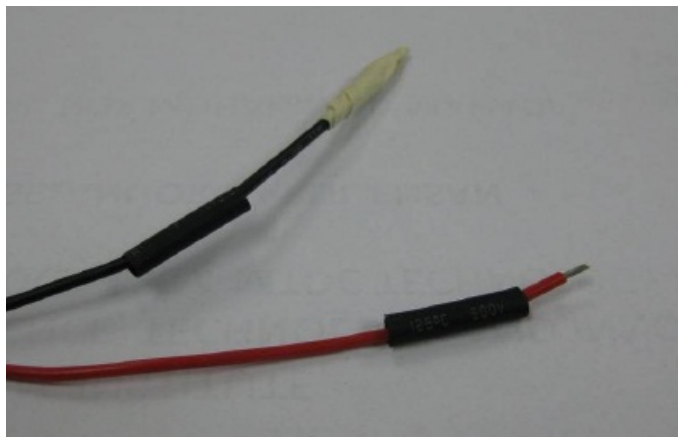




2. Cut and remove the wire insulator. If user needs to solder the wire directly from battery to Dean-T connector, solder **one terminal at a time** and leave another one wrapped.



3. Cut the shrinking tube to ~2cm each. Slide in the shrinking tube into the wire. The shrinking tube is used to protect the connection at the Dean-T terminal.

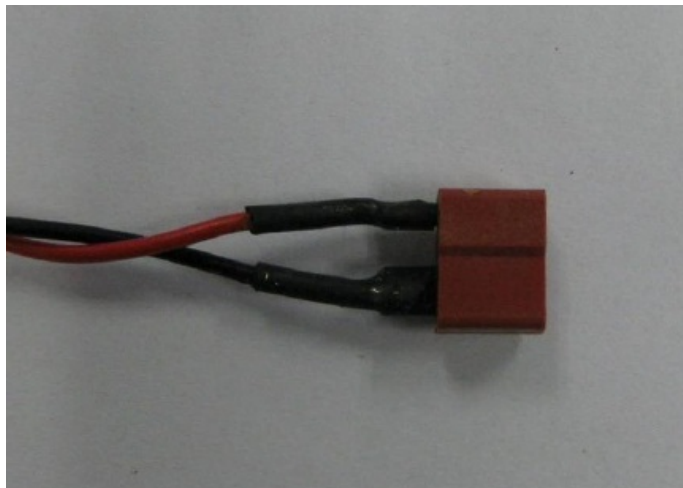


4. Solder the wire to Dean-T connector. Be careful while soldering and make sure the polarity is correct.

5. Cover the connection with shrinking tube and supply heat to it. The shrinking tube will shrink and cover the connection neatly as shown below. User may use soldering iron to heat the shrinking tube.

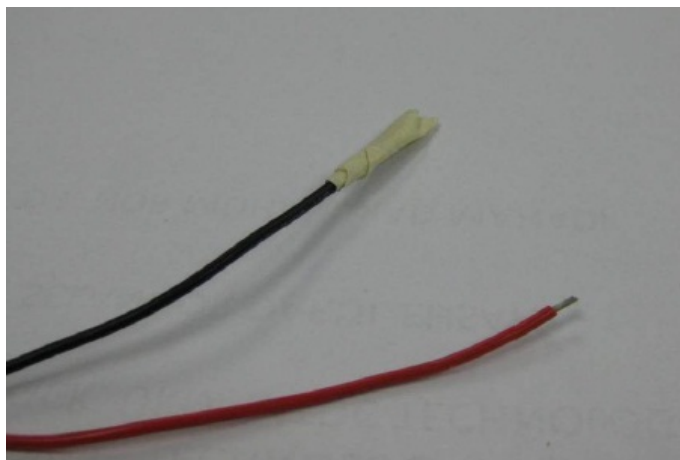
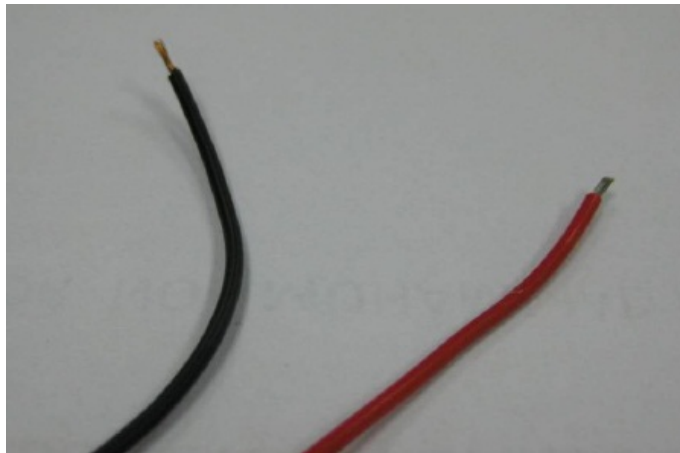


6. Continue with another terminal.



Steps to solder the wire directly to the pad at bottom layer are shown below:

1. Identify the polarity of power terminal. There are + and – marking at the bottom layer of [MDS40A](#).
2. Cut and remove the wire insulator. Solder **one terminal at a time** and leave another one wrapped.

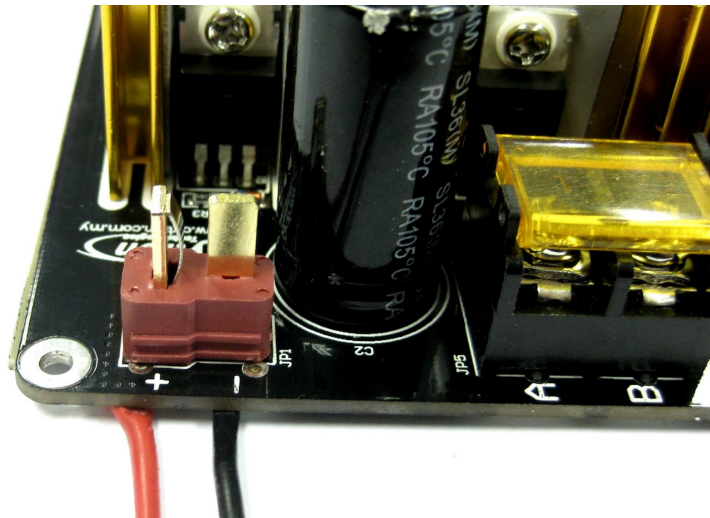


3. Solder the wire to the pad at the bottom layer. Be careful while soldering and make sure the polarity is correct.

4. Continue with another terminal.



5. Below is an example of power cable being soldered directly to the bottom layer.



## 6.0 MOTOR CONNECTION

Similar to the power supply, connection to the motor can be made either via the terminal block, or it can be soldered directly to the bottom layer pad.

**NOTE:**

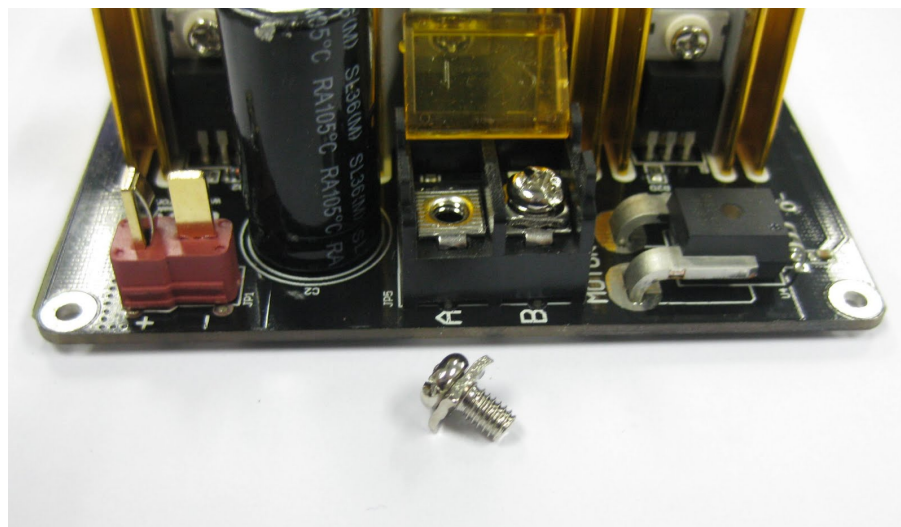
For application where the current is  $> 20A$ , it's recommended to solder the wire directly to the pad at bottom layer.

### Steps to connect the motor via terminal block:

1. Open the cover for terminal block.



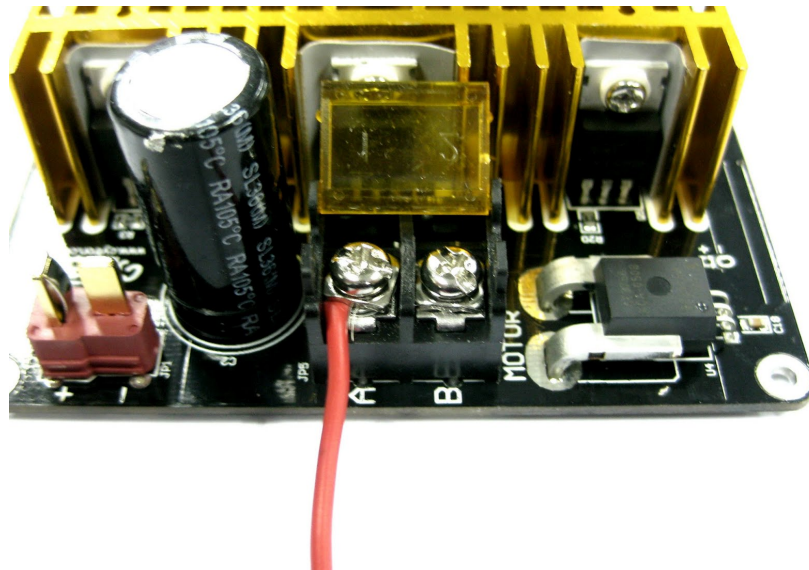
2. Remove the screw from the terminal block.



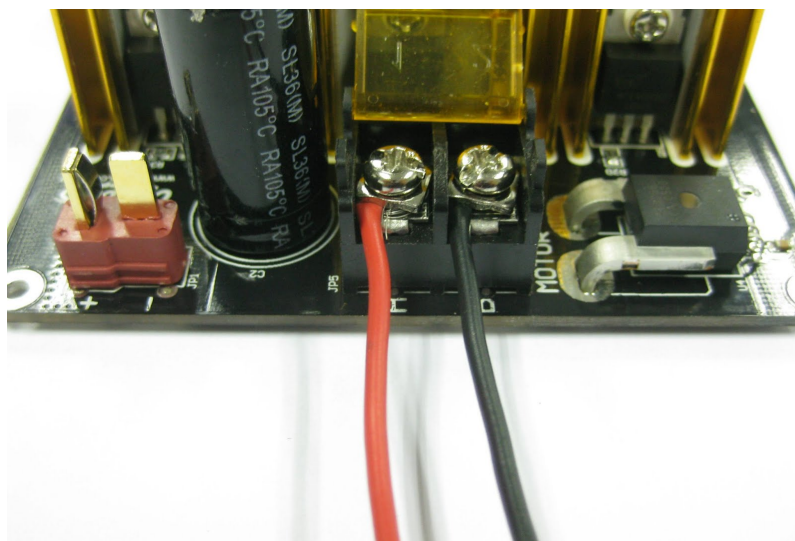
3. Wrap the wire of DC motor around the screw.



4. Put back the screw into terminal block and tighten the screw.

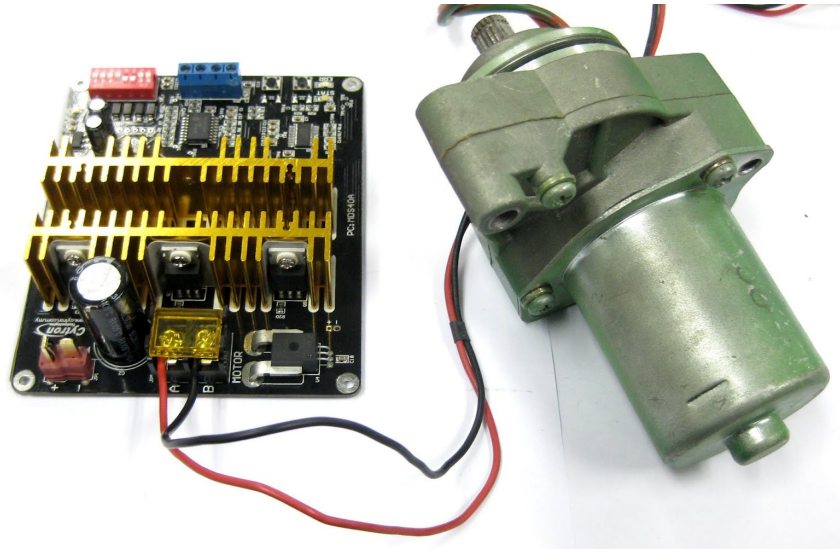


5. Repeat step 2-4 for another wire of DC motor.



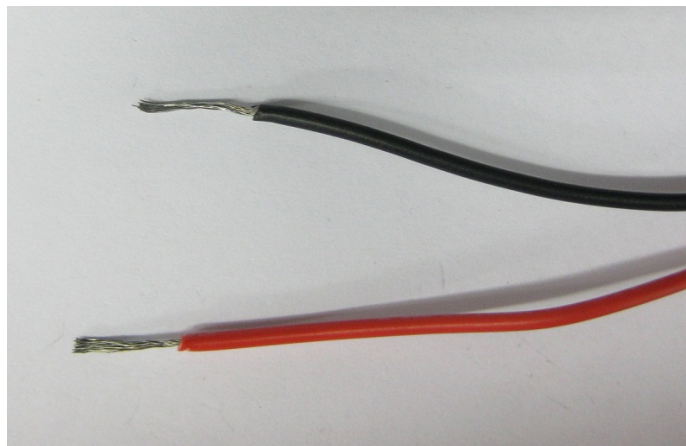


6. This is an example connection of DC motor via terminal block.

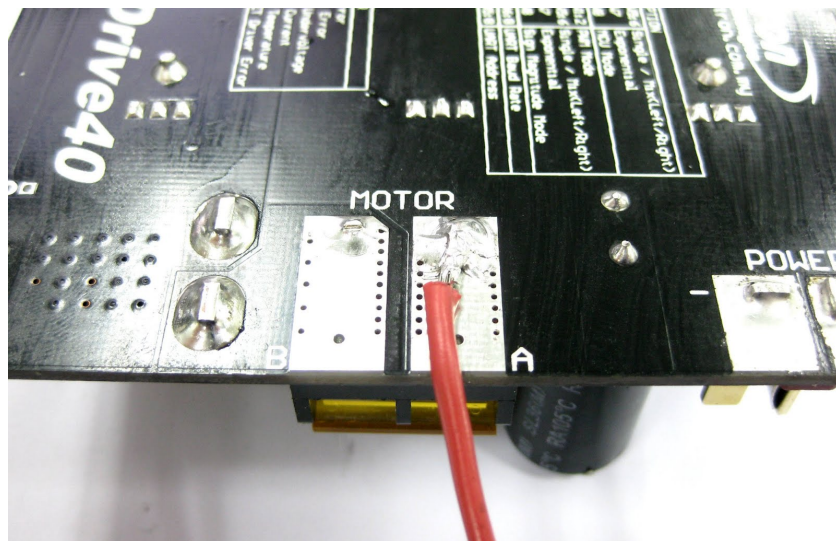


**Steps to solder motor connection directly to the bottom layer pad:**

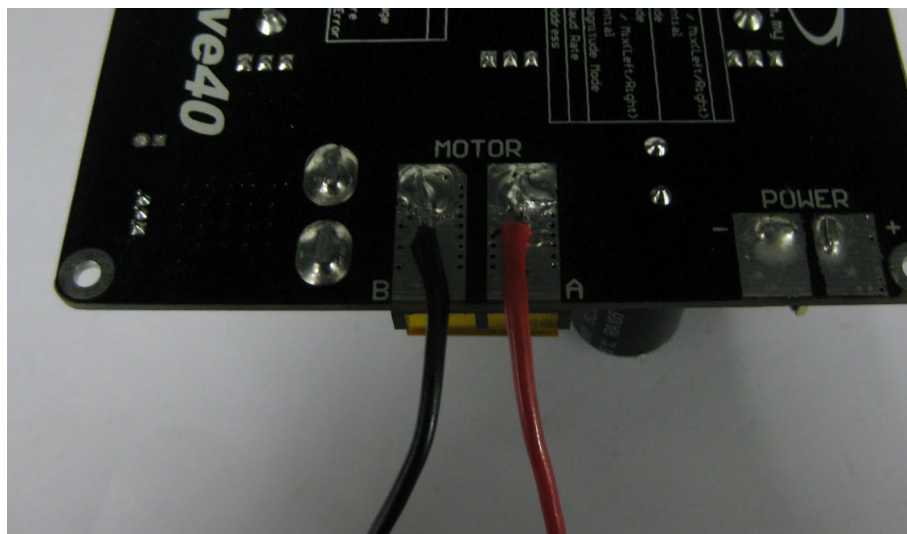
1. Cut the motor wire and remove the insulator.



2. Solder the wire to the pad at the bottom layer.



3. Continue with another terminal as shown below.



## 7.0 SAFETY FEATURES

[SmartDrive40](#) incorporates some safety features which make it a robust and reliable motor driver. Below are the detailed descriptions for each feature.

a. **Reverse Polarity Protection**

Unlike the other motor driver in the market, SmartDrive40 incorporates 2 extra MOSFET for reverse polarity protection. Hence, user no longer will see smoke coming out from the board if the power supply is connected at wrong polarity.

b. **LiPo Under Voltage Warning (Error LED blinks 3 times)**

Upon power on, SmartDrive40 will automatically detect the number of cells for the LiPo battery. If the input voltage falls below 3.3V per cell during operation, the error LED will blink to warn the user. However, the power to the motor will be maintained and will not be cut out. Thus, it is the user's responsibility to stop the motor and replace the battery to avoid further damage to the battery.

If the other type of battery is used to power the board, the LiPo under voltage warning will still be shown. In this case, user may ignore the warning and he/she needs to estimate when to replace the battery by him/herself.

c. **Over Current Protection (Error LED blinks 4 times)**

If over current is detected for more than 1 second, the current limiting feature will kick in and limit the motor current to the over current threshold (40A by default). The current limiting only starts working after 1 second to allow a higher startup current for the motor when it starts running.

The actual over current threshold is depending on the temperature of the board.

d. **Over Temperature Protection**

SmartDrive40 is equipped with a temperature sensor to monitor its operating temperature. It will gradually lower down the over current and current limiting threshold base on the temperature as shown below:

Temperature Range (°C)	Over Current Threshold (A)
< 110	40
110 – 120	35
120 – 130	30
130 – 140	25
> 140	20

## 8.0 INPUT MODE

When the [SmartDrive40](#) is powered up, both STAT LED and ERR LED will blink together for 10 times. After that, the input mode will be read from the DIP switch and retained as long as the driver is powered. If you wish to change the input mode, you will need to change the setting on the DIP switch and power cycle the driver (Turn it off and turn it on again).

In RC or Analog/PWM Input mode, two units of SmartDrive40 may be used together to control two motors in mixed mode. This is useful to control the robot with differential drive system where one input controls the speed and forward/backward direction of the robot, while another input controls the left/right direction of the robot.

SmartDrive40 supports four different types of input mode. The DIP switch settings for each mode and the function for input pin are summarized as below:

Input Mode	DIP Switch (SW1 - SW4)	DIP Switch (SW5 - SW8)	Description	Input 1	Input 2
RC	0000XXXX	SW5:6  SW7  SW8	Single/Mix Mode 0X - Single 10 - Mix (Left)* 11 - Mix (Right)*  Exponential Mode  MCU Mode	Speed	Steering (Mix Mode only)
Analog / PWM	XX01XXXX	SW1:2  SW5:6  SW7  SW8	Analog/PWM Mode 00 - Analog 11 - PWM  Single/Mix Mode 0X - Single 10 - Mix (Left)* 11 - Mix (Right)*  Exponential Mode  Sign-Magnitude Mode (Single Mode only). SW2 must be 0.	Speed	Speed (Sign-Magnitude is OFF)  Direction (Sign-Magnitude is ON)
Simplified Serial	0010XXXX	SW5  SW6:8	N/A  UART Baud Rate 000 - 1200 001 - 2400 010 - 4800 011 - 9600 100 - 19200 101 - 38400 110 - 57600 111 - 115200	UART Rx	Slave Select
Packetized Serial	0011XXXX	SW5:8	UART Slave Address (0x00 – 0x0f)	UART Rx	N/A

0 – OFF      1 – ON      X – Don't Care

\* Left/Right is just for reference. Actual side of the motor may depends on the RC transmitter or analog/PWM input.

## 8.1 RC INPUT MODE

In RC input mode, the speed and direction of the motor is controlled by the signal from the standard hobby radio control transmitter and receiver, or a microcontroller generating the similar signal.

**NOTE:** The RC transmitter must be turn on before power up the SmartDrive40.




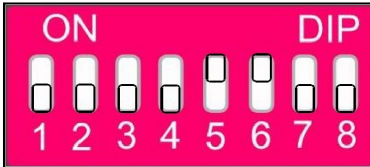
RC Input mode is selected by setting all the **SW1 – SW4** to **0 (Down)**. **SW5 – SW8** can be configured depending on the requirement of the user.

Input Mode	SW1:SW4 0000	RC Input Mode
Single/Mix Mode	SW5:SW6 0X	<b>Single Channel Mode</b> – The motor speed and direction are controlled by a single RC channel connected to Input 1. Motor stops when the input signal is at the center point. Input 2 is not used in this mode.
	10	<b>Left Mix Mode*</b> – This mode should be selected for the left motor of the robot differential drive system. Input 1 controls the overall speed as well as forward/backward movement of the robot. Input 2 controls the left/right or pivot movement of the robot. In left mix mode, the motor will be slowed down when the robot is commanded to turn left and vice versa.
	11	<b>Right Mix Mode*</b> – This mode should be selected for the right motor of the robot differential drive system. Input 1 controls the overall speed as well as forward/backward movement of the robot. Input 2 controls the left/right or pivot movement of the robot. In right mix mode, the motor will be slowed down when the robot is commanded to turn right and vice versa.
Exponential Mode	SW7 0	<b>Off</b> – The speed is linear with the input signal. This is for low to medium speed motor.
	1	<b>On</b> –The response to input is exponential and this soften the control around the center zero speed point. This is suitable for high speed and very sensitive motor.
MCU Mode	SW8 0	<b>Off</b> – The center point will be calibrated upon power up. Timeout occurs after lost of signal for 100ms and the motor will be stopped for safety purpose.
	1	<b>On</b> – The center point is fixed at 1.5ms and the timeout feature is disabled. Motor will continue to run with previous speed if new signal is not detected. This is useful when a microcontroller is used to control the motor. The microcontroller does not need to send the pulse continuously to the SmartDrive40. Instead, it only needs to send a single pulse when the speed or direction of the motor needs to be changed.

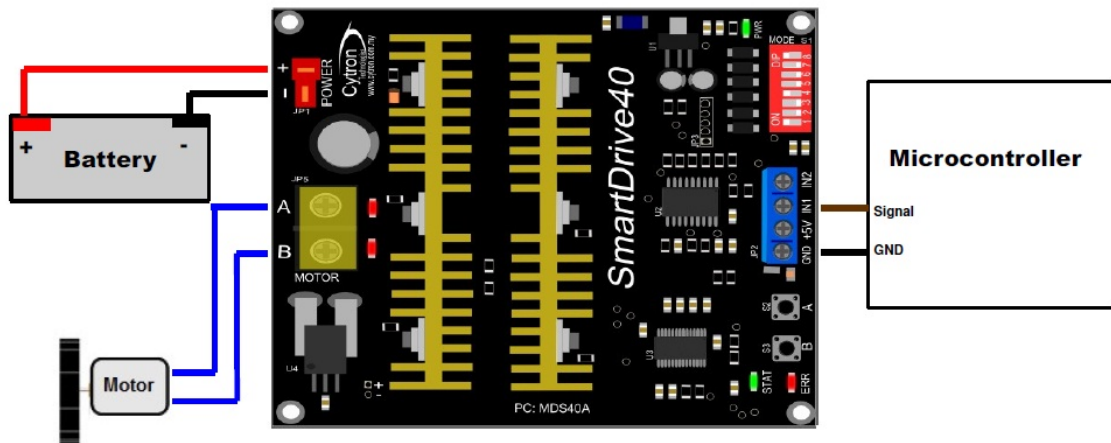
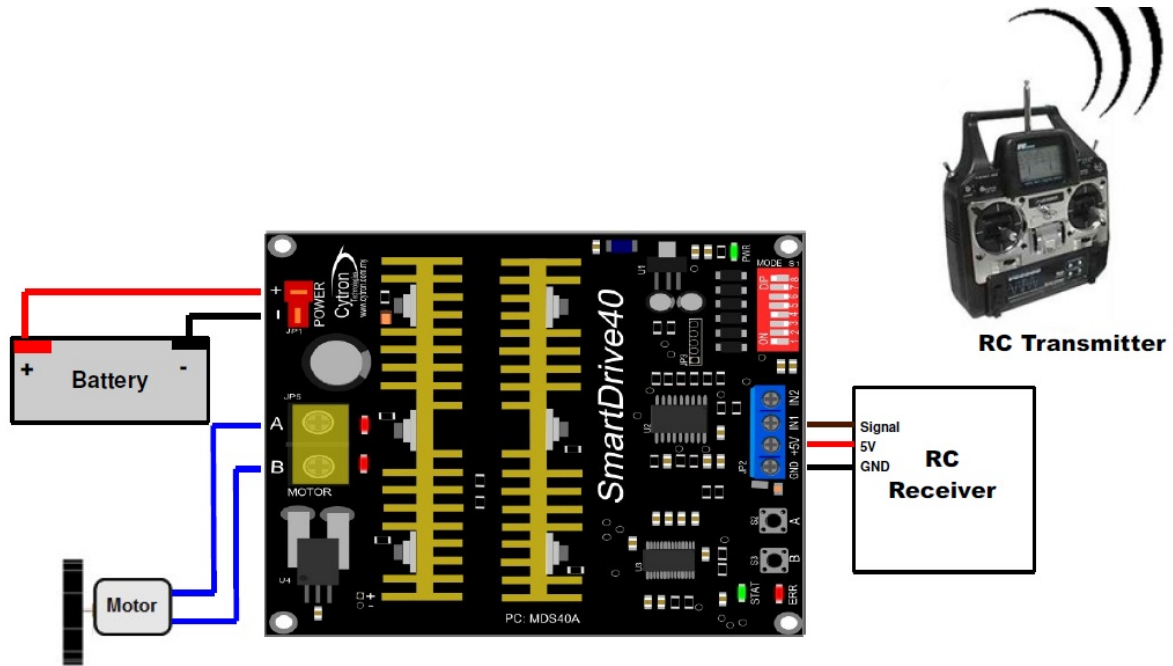
0 – OFF      1 – ON      X – Don't Care

\* Left/Right is just for reference only. Actual side of the motor may depends on the RC transmitter.

Table below shows the commonly used DIP switch settings for RC mode.

DIP Switch	Mode
 <p>(00000000)</p>	<ul style="list-style-type: none"> <li>• RC Mode</li> <li>• Single Channel Mode</li> <li>• Exponential Off</li> <li>• MCU Mode Off</li> </ul>
 <p>(00000010)</p>	<ul style="list-style-type: none"> <li>• RC Mode</li> <li>• Single Channel Mode</li> <li>• Exponential On</li> <li>• MCU Mode Off</li> </ul>
 <p>(00001000)</p>	<ul style="list-style-type: none"> <li>• RC Mode</li> <li>• Left Mix Mode</li> <li>• Exponential Off</li> <li>• MCU Mode Off</li> </ul>
 <p>(00001100)</p>	<ul style="list-style-type: none"> <li>• RC Mode</li> <li>• Right Mix Mode</li> <li>• Exponential Off</li> <li>• MCU Mode Off</li> </ul>

Figures below show the connection in RC mode for Single Channel Mode. Input 1 is connected to either a RC Receiver or a microcontroller generating the RC pulse.



## 8.2 ANALOG/PWM INPUT MODE

In Analog/PWM input mode, the speed and direction of the motor is controlled by the analog voltage or PWM signal. The valid input range is 0 – 5V and it's very easy to control by using a potentiometer. For example, the motor can be controlled by a joystick or foot pedal with potentiometer.

**NOTE:** The Analog/PWM signal to stop the motor (2.5V if Sign-Magnitude mode is off, 0V otherwise) must be available when the SmartDrive40 is turned on. Else, the driver will show Input Error until the correct signal is available.

Analog/PWM input mode is selected by setting **SW3 to 0 (Down) and SW4 to 1 (Up)**. SW1 – SW2 and SW5 – SW8 can be configured depending on the requirement of the user.

PWM Mode	<b>SW1:SW2</b> 00	<b>Off</b> - The input is analog signal. The filter capacitor is not connected and the input signal is not filtered. SW1 is for Input 1 while SW2 is for Input 2.
	11	<b>On</b> - The input is PWM signal. The filter capacitor is connected and the input signal is low pass filtered to be an analog signal. SW1 is for Input 1 while SW2 is for Input 2. SW2 must be set to 0 if Sign-Magnitude mode is turned on.
Input Mode	<b>SW3:SW4</b> 01	Analog/PWM Input Mode.
Single/Mix Mode	<b>SW5:SW6</b> 0X	<b>Single Channel Mode</b> - The motor speed and direction are controlled by a single channel connected to Input 1. Motor stops when the input signal is at the center point. Input 2 is not used in this mode.
	10	<b>Left Mix Mode*</b> - This mode should be selected for the left motor of the robot differential drive system. Input 1 controls the overall speed as well as forward/backward movement of the robot. Input 2 controls the left/right or pivot movement of the robot. In left mix mode, the motor will be slowed down when the robot is commanded to turn left and vice versa. SW8 must be set to 0.
	11	<b>Right Mix Mode*</b> - This mode should be selected for the right motor of the robot differential drive system. Input 1 controls the overall speed as well as forward/backward movement of the robot. Input 2 controls the left/right or pivot movement of the robot. In right mix mode, the motor will be slowed down when the robot is commanded to turn right and vice versa. SW8 must be set to 0.
Exponential Mode	<b>SW7</b> 0	<b>Off</b> – The speed is linear with the input signal. This is for low to medium speed motor.
	1	<b>On</b> –The response to input is exponential and this soften the control around the center zero speed point. This is suitable for high speed and very sensitive motor.
Sign-Magnitude Mode	<b>SW8</b> 0	<b>Off</b> – Motor stops when the input signal is 2.5V. Motor moves in one direction when the input is < 2.5V and in another direction



	1	<p>when the input is &gt; 2.5V.</p> <p><b>On</b> – Input 1 controls the speed of the motor. Motor stops when the input is 0V and run at full speed when the input is 5V. Input 2 is digital input and it controls the direction of the motor. SW2 must be set to 0.</p>
--	---	---

0 - OFF      1 - ON      X - Don't Care

\* Left/Right is just for reference only. Actual side of the motor may depends on the Input signal.

Table below shows the commonly used DIP switch settings for Analog/PWM mode.

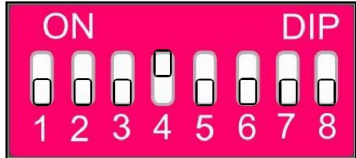



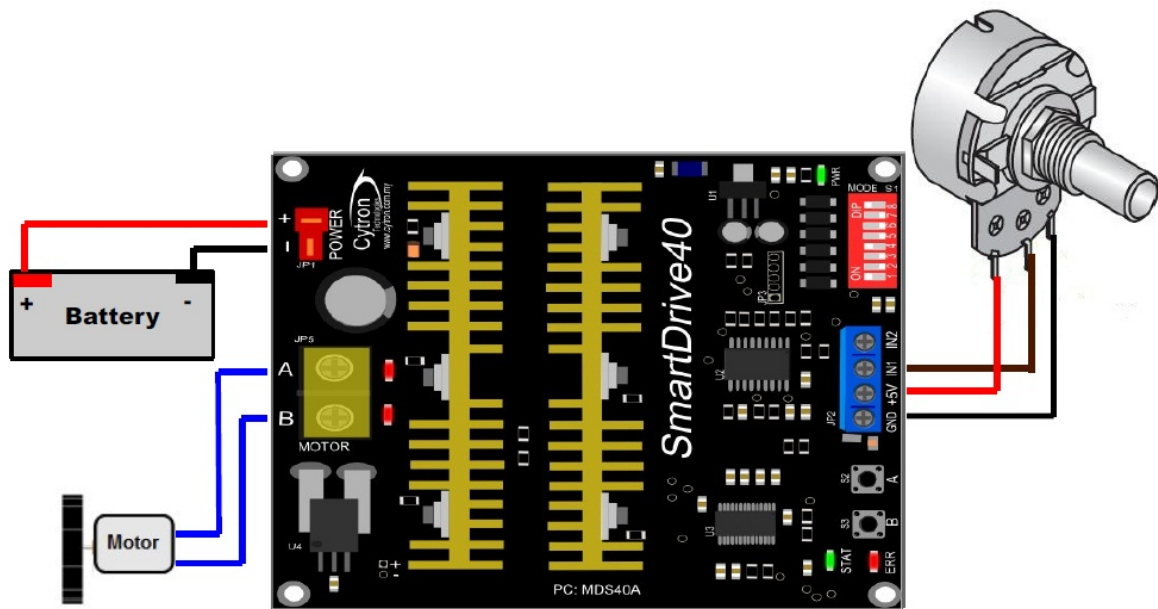
DIP Switch	Mode
 <p>(00010000)</p>	<ul style="list-style-type: none"> <li>● Analog Mode</li> <li>● Single Channel Mode</li> <li>● Exponential Off</li> <li>● Sign-Magnitude Mode Off</li> </ul>
 <p>(10010001)</p>	<ul style="list-style-type: none"> <li>● PWM Mode</li> <li>● Single Channel Mode</li> <li>● Exponential Off</li> <li>● Sign-Magnitude Mode On</li> </ul>
 <p>(11011000)</p>	<ul style="list-style-type: none"> <li>● PWM Mode</li> <li>● Left Mix Mode</li> <li>● Exponential Off</li> <li>● Sign-Magnitude Mode Off</li> </ul>
 <p>(11011100)</p>	<ul style="list-style-type: none"> <li>● PWM Mode</li> <li>● Right Mix Mode</li> <li>● Exponential Off</li> <li>● Sign-Magnitude Mode Off</li> </ul>

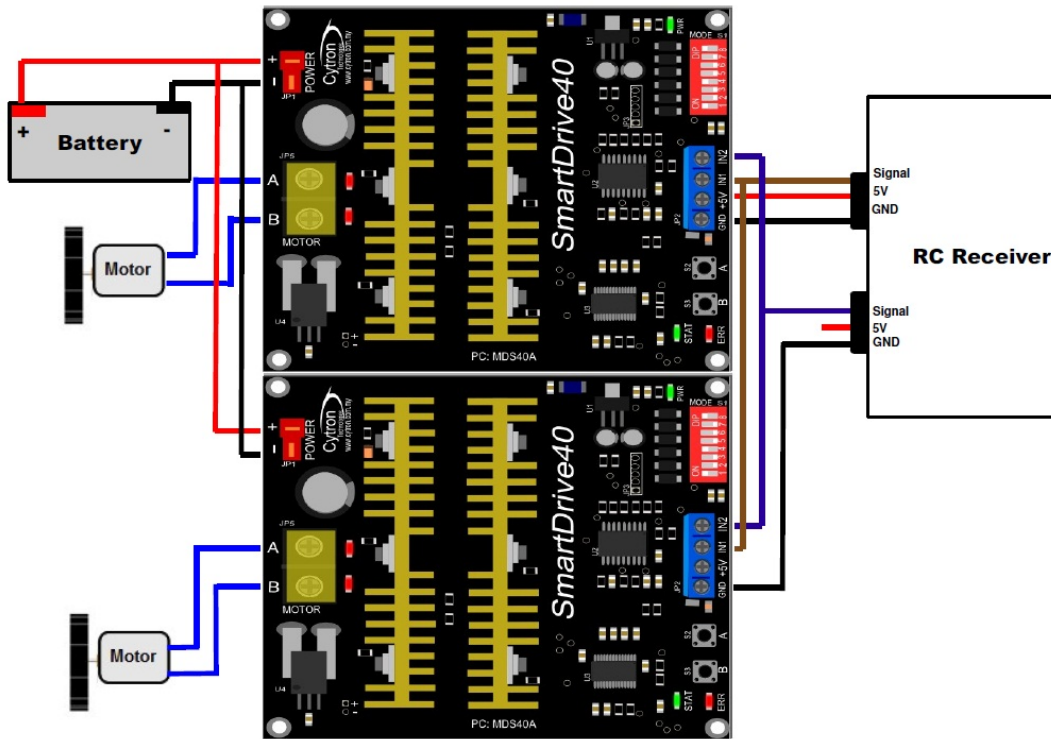
Figure below shows the connection of Analog/PWM mode for Single Channel Mode.



## Setting Up SmartDrive40 for Differential Drive System

This example is based on the RC input mode. However, it can be applied for the Analog/PWM input mode as well.

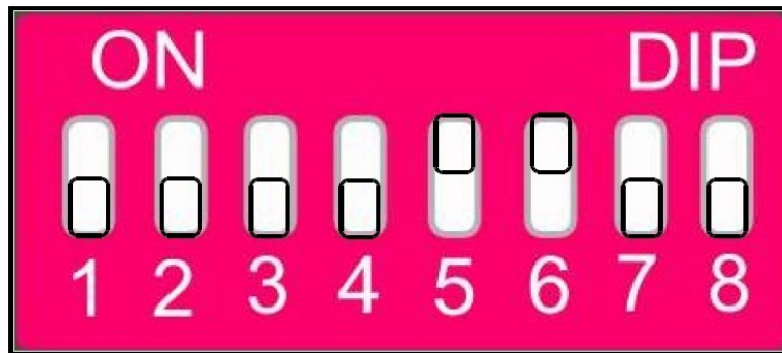
1. Set up the connection for two units of [SmartDrive40](#) as shown below.



2. Set the DIP Switch to operate in RC mode. Driver for left motor must be set as left mix mode and driver for right motor must be set as right mix mode. Exponential can be turned on or off for both motor, but both motor must have the same exponential setting. MCU mode should be turned off for both motor.



DIP switch setting for Left Mix Mode (00001000).  
Exponential and MCU Mode are turned off.



DIP switch setting for Right Mix Mode (00001100).  
Exponential and MCU Mode are turned off.

3. For the first time, the direction and mixing side (left/right) of the motor must be checked to make sure it is correct. Follow the steps below to set up the motor mixing side and direction:
  - i. Turn on the RC transmitter first and followed by the SmartDrive40.
  - ii. Push the speed channel stick to maximum forward position and hold it. Both motors should run with full speed now. Ignore the direction of the motors for the moment.
  - iii. Still holding the speed channel stick in maximum forward position, push the direction channel stick to left at the same time. The left motor should run slower than the right motor. If this is not so, power off the SmartDrive40 and change the DIP switch setting of mixing side for both motor. After that, start from step 1 again.
  - iv. Push the direction channel stick to right. The right motor should run slower than the left motor. This means the mixing side of the motor is set correctly.
  - v. Now, we want to make sure the motor direction is correct. Push the speed channel stick to maximum forward position and center the direction channel stick. Both motor should run in the forward direction. If this is not so, reverse the polarity of the motor connection.
  - vi. Push the speed channel stick to maximum backward position and center the direction channel stick. Both motor should run in the backward direction. This means the motors are running in the correct direction and the setting process has been completed.

### 8.3 SIMPLIFIED SERIAL MODE

In Simplified Serial mode, [SmartDrive40](#) is controlled by using the UART interface. Input 1 is the UART Rx pin and Input 2 is the Slave Select pin.

The Slave Select must be HIGH in order for the driver to receive the UART command. If the Slave Select pin is set to LOW, all the UART data will be ignored. This feature allows multiple SmartDrive40 to be connected together to a single microcontroller UART port. The Slave Select pin is internally pulled high and it may be left unconnected if not used.

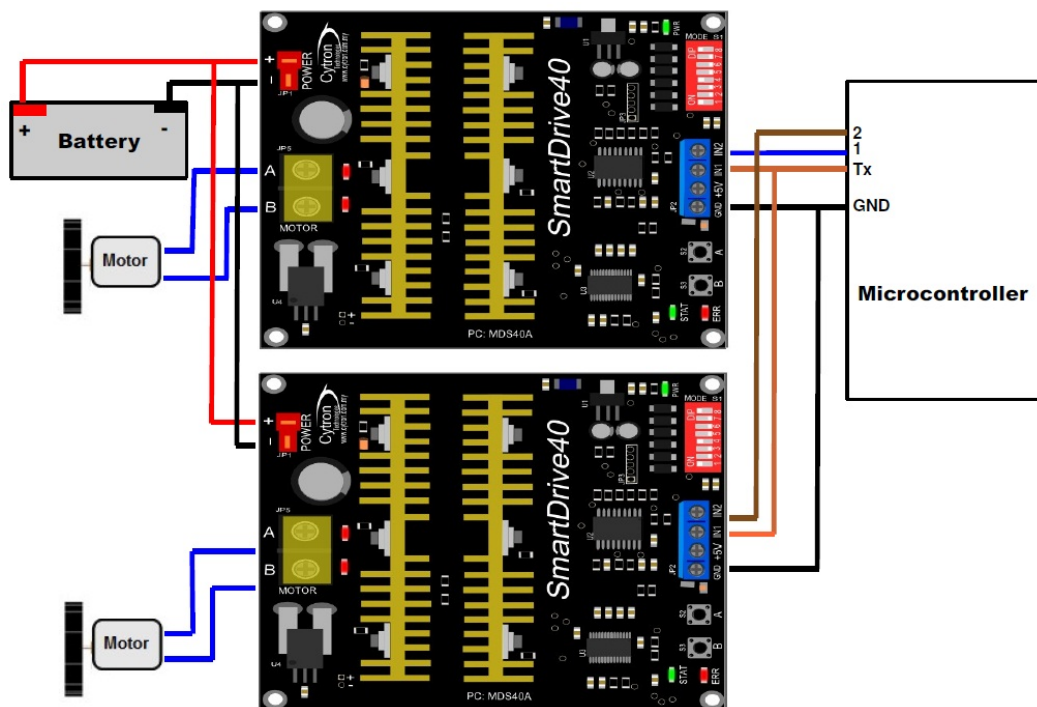
A single byte of data is all you need to control the speed and direction of the motor. Sending byte 127 stops the motor, 0 is full reverse and 255 is full forward.

Simplified Serial mode is selected by setting **SW1, SW2 and SW4 to 0 (Down) and SW3 to 1 (Up)**. SW5 is not used in this mode and SW6 – SW8 are used to select the UART baud rate.

Input Mode	<b>SW1 - SW4</b> 0010	<b>Simplified Serial Mode</b>
UART Baud Rate	<b>SW6 - SW8</b>	<b>Baud Rate</b>
	000	1200
	001	2400
	010	4800
	011	9600
	100	19200
	101	38400
	110	57600
	111	115200

0 - OFF      1 - ON      X - Don't Care

Figure below shows the connection to multiple SmartDrive40 in Simplified Serial Mode.



## 8.4 PACKETIZED SERIAL MODE

In Packetized Serial mode, [SmartDrive40](#) is controlled by using the UART interface. Input 1 is the UART Rx pin and Input 2 is not used in this mode. To control the motor, data sent to the driver must be in 4 bytes packet format which includes a header, address, command and checksum. Up to 16 units of SmartDrive40 can be connected together to a single microcontroller UART port.

Besides that, the SmartDrive40 also incorporates an Auto-Baud feature in Packetized Serial mode. When the driver is first powered up, the host microcontroller must send a header byte (Decimal 85) to the driver. The driver will then calculate the baud rate automatically based on this character. After that, SmartDrive40 is ready for command and the baud rate cannot be changed without power off and on again.

**NOTE:**

1. When the driver is powered up and waiting for the header byte, the error LED will blink and indicate that there is input error.
2. SmartDrive40 may take up to 500ms to start up after power is applied. Sending the header byte for auto baud during this time period may cause undesirable results. Please allow a one-second delay between applying power and sending the header byte.

Packetized Serial mode is selected by setting **SW1, SW2 to 0 (Down) and SW3, SW4 to 1 (Up)**. SW5 – SW8 are used to select the address.

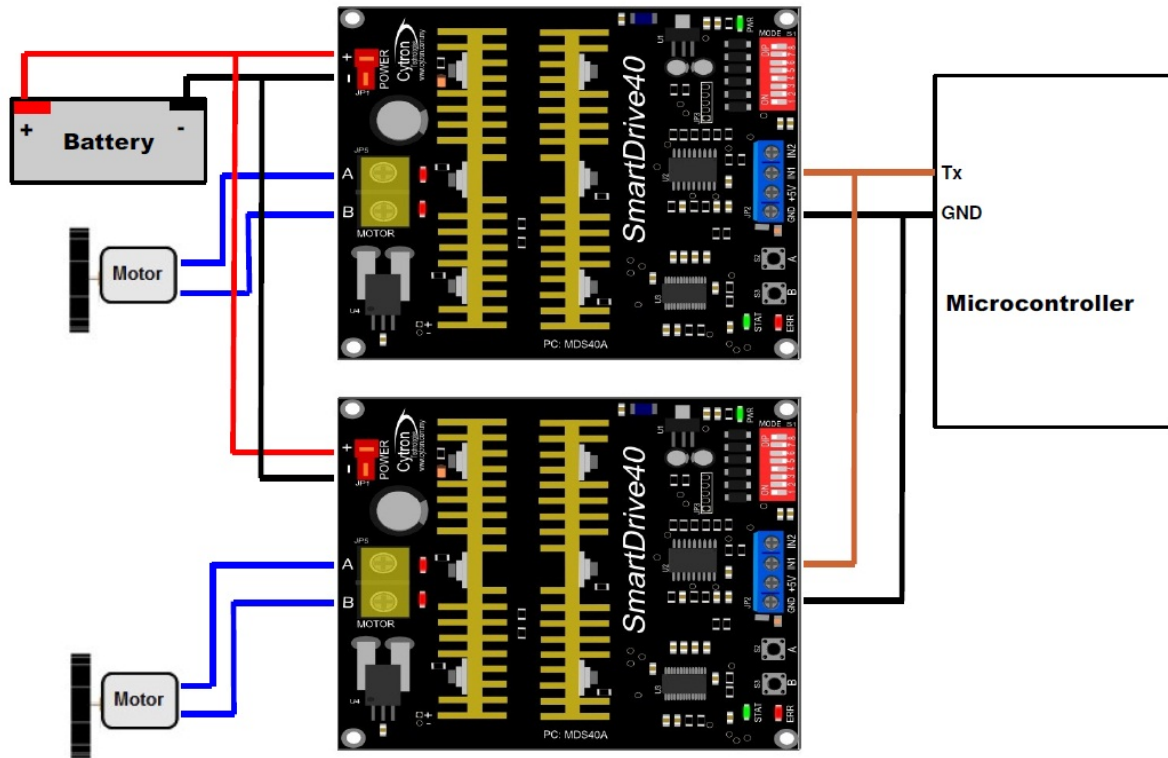
Input Mode	<b>SW1 - SW4</b> 0011	<b>Packetized Serial Mode</b>
UART Address	<b>SW5 - SW8</b> 0000 - 1111	<b>0 - 15</b>

0 - OFF      1 - ON      X - Don't Care

A packet consists of 4 bytes and the format is shown in the following table.

Byte	Name	Value (Decimal)	Description
1	Header	85	To indicate the start of packet.
2	Address	0 - 15	Used to identify the driver when multiple units are connected together. The address byte must match the address configured with the DIP switch.
3	Command	0 – 255	Value 127 stops the motor, 0 is full reverse and 255 is full forward.
4	Checksum	0 – 255	The value for checksum must be the result of Header + Address + Command

Figure below shows the connection to multiple drivers in Packetized Serial Mode.



## 9.0 WARRANTY

- Product warranty is valid for 12 months.
- Warranty only applies to manufacturing defect.
- Damaged caused by miss-use is not covered under warranty
- Warranty does not cover freight cost for both ways.

*Prepared by*  
**Cytron Technologies Sdn. Bhd.**  
19, Jalan Kebudayaan 1A,  
Taman Universiti,  
81300 Skudai,  
Johor, Malaysia.

*Tel:* +607-521 3178

*Fax:* +607-521 1861

*URL:* [www.cytron.com.my](http://www.cytron.com.my)  
*Email:* [support@cytron.com.my](mailto:support@cytron.com.my)  
[sales@cytron.com.my](mailto:sales@cytron.com.my)