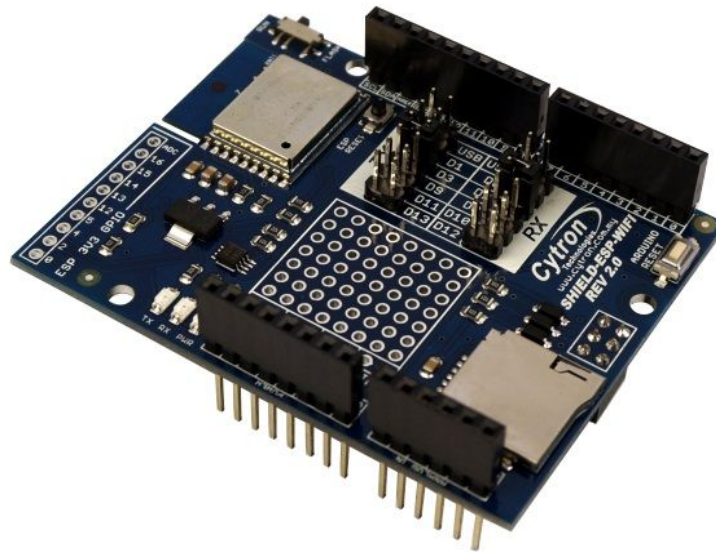


Cytron

Technologies

ESPWiFi Shield SHIELD-ESP-WIFI Rev2.0



User's Manual

V2.0

April 2016

Information contained in this publication regarding device applications and the like is intended through suggestion only and may be superseded by updates. It is your responsibility to ensure that your application meets with your specifications. No representation or warranty is given and no liability is assumed by Cytron Technologies Incorporated with respect to the accuracy or use of such information or infringement of patents or other intellectual property rights arising from such use or otherwise. Use of Cytron Technologies's products as critical components in life support systems is not authorized except with express written approval by Cytron Technologies. No licenses are conveyed, implicitly or otherwise, under any intellectual property rights.

Index

1.	Introduction	3
2.	Packing List	4
3.	Board or Product Layout	5
4.	Dimension	7
5.	UART/Serial Communication	8
6.	Hardware Installation	9
7.	Getting Started	10
8.	Firmware Installation	14
9.	Warranty	14

1.0 INTRODUCTION

ESPWiFi Shield Rev2.0 is an Arduino shield which integrates famous ESP-WROOM-02 WiFi module and provides low cost WiFi solution with any Arduino projects. It is compatible with [Arduino Uno](#), [Arduino Duemilanove](#), [Arduino Mega2560](#), [Arduino Leonardo](#) and possibly other pin compatible main boards.

ESP8266 WiFi shield provides easy and stable UART interface for users to communicate with onboard WiFi module using Arduino boards. The module is preloaded with AT firmware and the user can use provided library to implement WiFi solution in their Arduino projects. Advanced users can even customise and upload their own firmware on this ESP8266 module and use it as an additional microcontroller to create an even more powerful application together with Arduino boards.

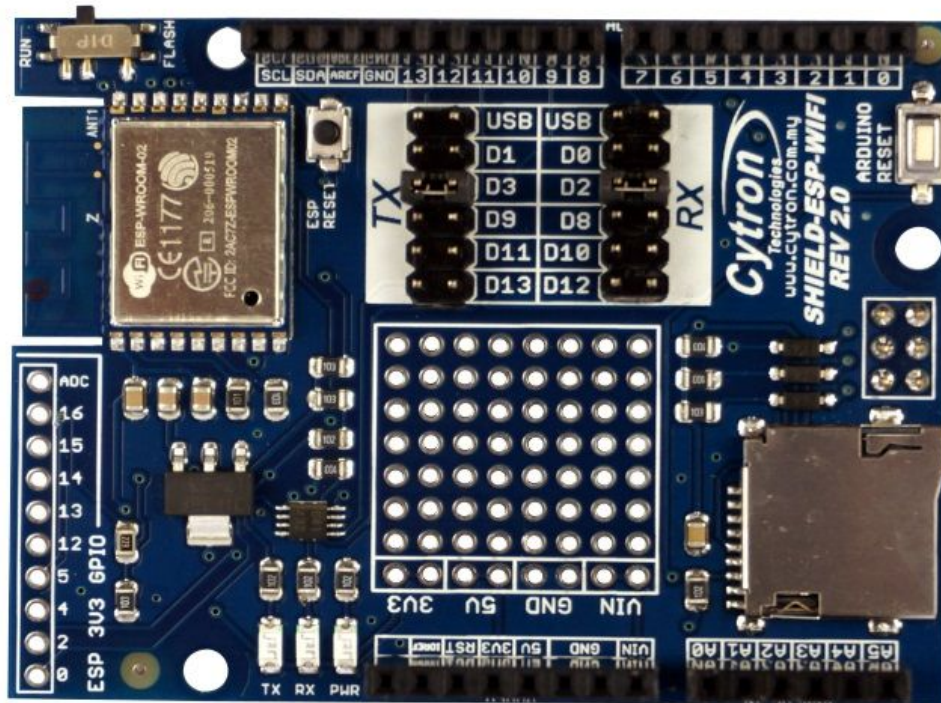
ESP8266 WiFi shield has stackable side headers which allows more Arduino-compatible shields to be stacked on top of it. This shield provides digital pins options for software and hardware UART or even PC-ESP communication. It also provides GPIO pin breakout and a small prototyping area for the users to construct small circuits suitable to their application. The shield also comes with microSD slot which serves as extra file storage for the users.

Features:

- Onboard ESP-WROOM-02 WiFi module with preloaded AT firmware
- Jumper selectors for software or hardware UART and PC-ESP communication.
- TX and RX LED indicators for ESP8266 WiFi module.
- ESP8266 3V3 GPIO pin breakout (including 9 digital I/O pins and 1 analog input pin)
- Prototyping area
- 1 MicroSD card slot.
- Arduino Reset and ESP8266 Module Reset button.

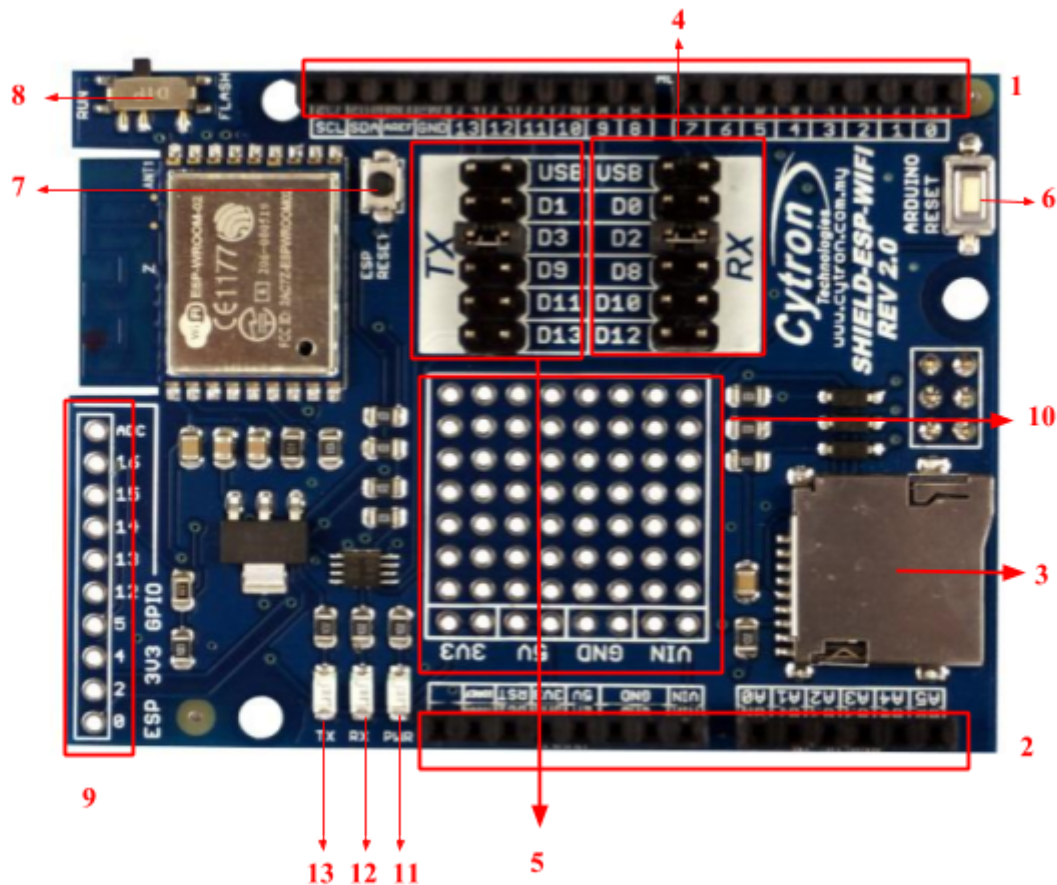
2.0 PACKING LIST

Please check the parts and components according to the packing lists. If there are any parts missing, please contact us at sales@cytron.com.my immediately.



1. 1 x ESPWiFi Shield
2. 2 x [mini jumper](#)

3.0 BOARD OR PRODUCT LAYOUT



1. Stackable Digital I/O header

This header pin is Digital I/O pin stacked to the Arduino main board. Other Arduino shield can be stacked on top of this stackable header.

2. Stackable Analog Input pin header

This header pin is Analog Input pin stacked to the Arduino main board. Other Arduino shield can be stacked on top of this stackable header.

3. MicroSD card chip select (CS)

Digital Pin 4 is used as chip select for MicroSD card. Do not make any other connection to this pin.

4. RX Pin Selector

User may select D0, D2, D8, D10 and D12 as the RX pin from Arduino main board with the mini jumper.

5. TX Pin Selector

User may select D1, D3, D9, D11 and D13 as the TX pin from Arduino main board with the mini jumper.

6. Arduino Reset button

Reset button is for convenience of user to reset the Arduino main board.

7. ESP Reset button

Reset button is for convenience of user to reset the onboard ESP8266 module.

8. Flash/Run slide switch

Slide switch is for convenience of user to select which mode ESP8266 module will enter once powered up.

Flash mode - the mode which ESP8266 module wait for firmware installation/update

Run mode - the mode which ESP8266 module run the installed firmware

9. ESP 3V3 GPIO breakout

Pin breakout from ESP8266 GPIO, consists of 9 Digital I/O pins and 1 Analog Input pin. All pins are 3.3V tolerant only.

10. Prototyping Area

Prototyping area for users to construct small circuits suitable to their applications.

11. Power LED

Power indicator LED for onboard ESP8266 module. The LED will turn on when 5V power is supplied to the module.

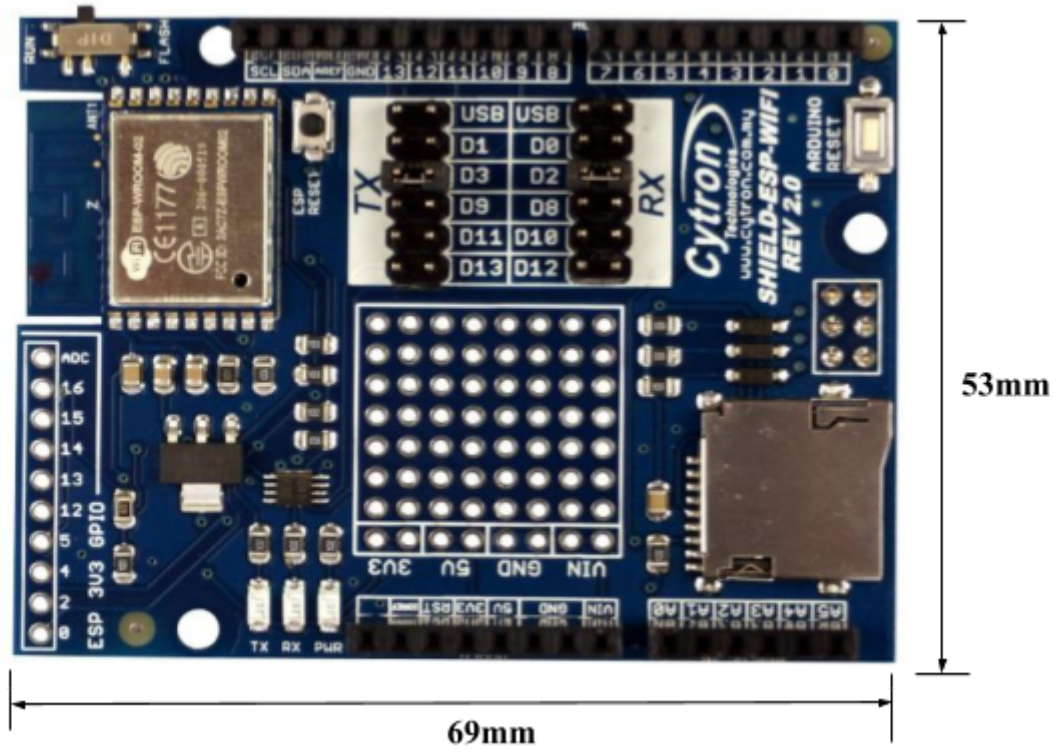
12. RX Indicator LED

RX LED as indicator for RX signal from ESP8266.

13. TX Indicator LED

TX LED as indicator for TX signal from ESP8266.

4.0 DIMENSION



5.0 UART/SERIAL COMMUNICATION

AT firmware of the ESP8266 WiFi module on ESPWiFi shield allows users to communicate with the module using UART communication.

Default settings are **9600 kbps baudrate, 8 bit data, 1 stop bit and no parity.**

5.1 Guideline for setting up TX and RX pin with Arduino Boards

The following table shows suitable RX and TX pins to be chosen for compatible Arduino boards.

UART		Arduino Boards
RX	TX	
USB*	USB*	Arduino Uno/Arduino Mega/Arduino Leonardo
D0	D1	Arduino Uno/Arduino Mega/Arduino Leonardo
D2	D3	Arduino Uno only
D8	D9	Arduino Uno/Arduino Leonardo
D10	D11	Arduino Uno**/Arduino Mega/Arduino Leonardo
D12	D13	Arduino Uno**/Arduino Mega

*** This option enables communication between ESP8266 module and PC using suitable UART software such as Arduino Serial Monitor, Hyperterminal, RealTerm etc.**

**** Only applicable if no SPI communication is used because SPI pinouts uses D10-D13 in Arduino Uno. MicroSD card cannot be used as well in this case.**

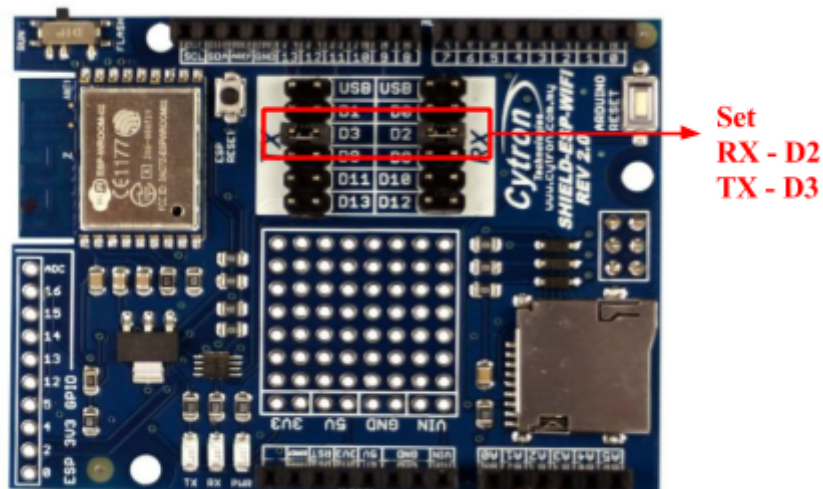
6.0 HARDWARE INSTALLATION

This section will show example installation of ESPWiFi Shield with [Arduino Uno](#) as a main controller. Besides Arduino Uno, other Arduino main boards such as [Arduino Duemilanove](#), [CT-UNO](#), [Arduino Mega2560](#) and [CIKU](#) are also compatible with this shield.

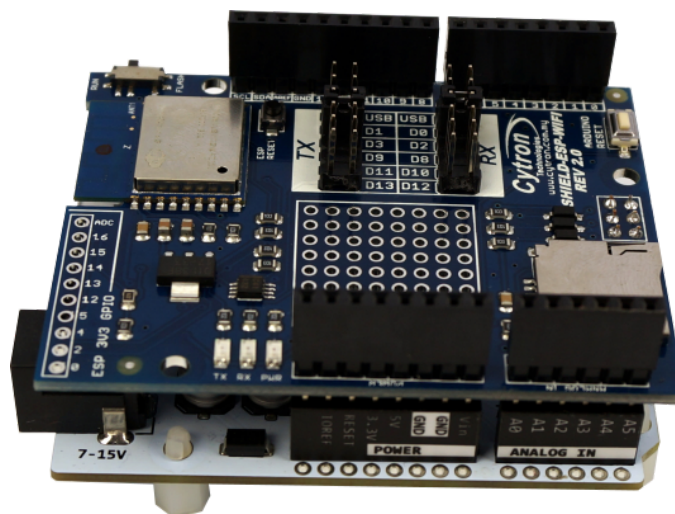
6.1 Arduino Uno

Arduino is an open-source physical computing platform based on a simple I/O board and a development environment that implements the Processing/Wiring language. ESPWiFi Shield can be used together with Arduino Uno. Figure below shows example hardware connection between Arduino Uno and ESPWiFi Shield; it is simply stacking up the shield onto the Arduino main board.

1. Set TX and RX pin for ESPWiFi Shield. The selection is done by using mini jumper on board. Please refer to Section 5.1 for suitable RX and TX pin selection.
2. Please be cautious to initialize the correct Arduino's digital pin in coding/software according to the selected TX and RX pins for the communication. We recommend user to use software serial (D3-TX, D2-RX) instead of hardware serial.



3. Stack ESPWiFi Shield on [Arduino Uno](#). Ensure that the pins alignment is correct.



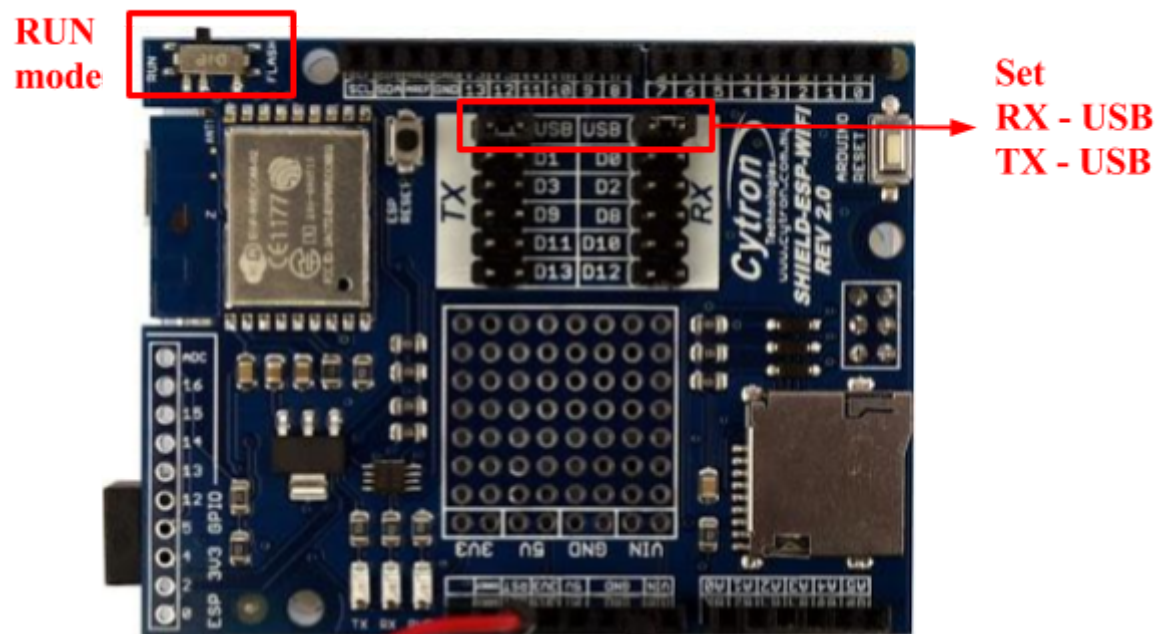
7.0 GETTING STARTED

This section will show examples of using ESPWiFi Shield together with Arduino Board to

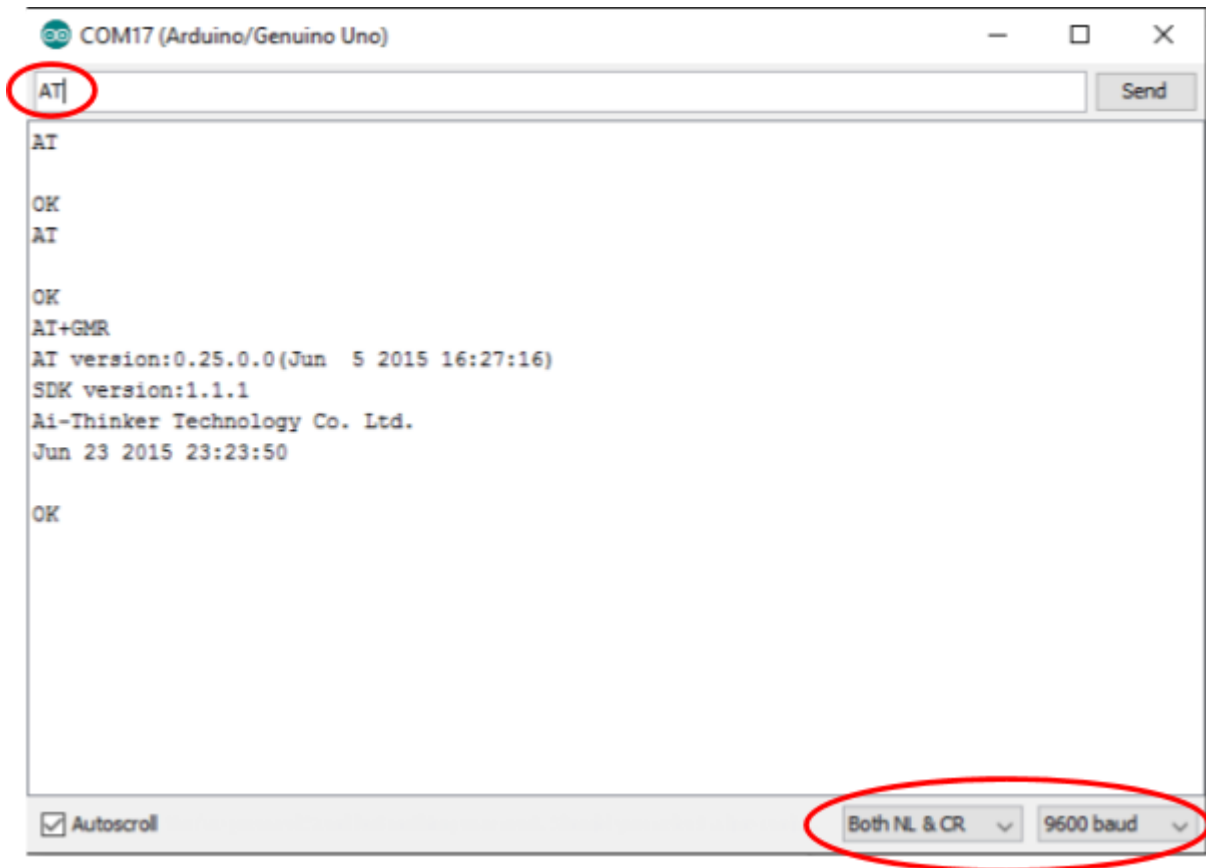
- 1) perform AT test - basic module testing by sending AT commands
- 2) create a simple WiFi server

7.1 AT Test

1. Stack ESPWiFi Shield onto compatible Arduino Board. For this example, Arduino Uno is used.
2. Select USB for both RX and TX pins. ****Note: This setting is only for entering AT command.**
3. Make sure the slide switch is switched to **RUN** mode.

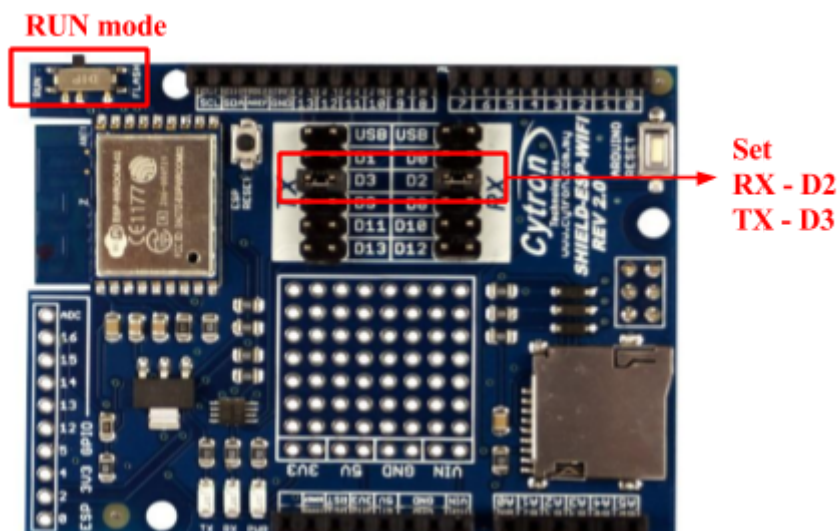


4. ****Note: For AT Test, connect RST pin to GND using jumper wire. (Another alternative, upload an empty sketch to Arduino main board before stacking ESPWiFi Shield onto Arduino board.)**
5. Connect Arduino board to PC using USB cable.
6. Open Arduino IDE. Determine which COM port Arduino Uno is connected to and configure the port settings under menu Tools -> Port.
7. Open and set up Arduino Serial Monitor with settings below.
 - 9600 Baud
 - Both NL & CR
8. Figure below shows sending “AT” using Arduino Serial Monitor. If the result returns “OK”, it means you have successfully communicate with the ESP8266 module on ESPWiFi Shield, AT test is successful. User can also try out other AT commands like AT+GMR, etc.



7.2 Create a simple WiFi server using Arduino Uno + ESPWiFi Shield

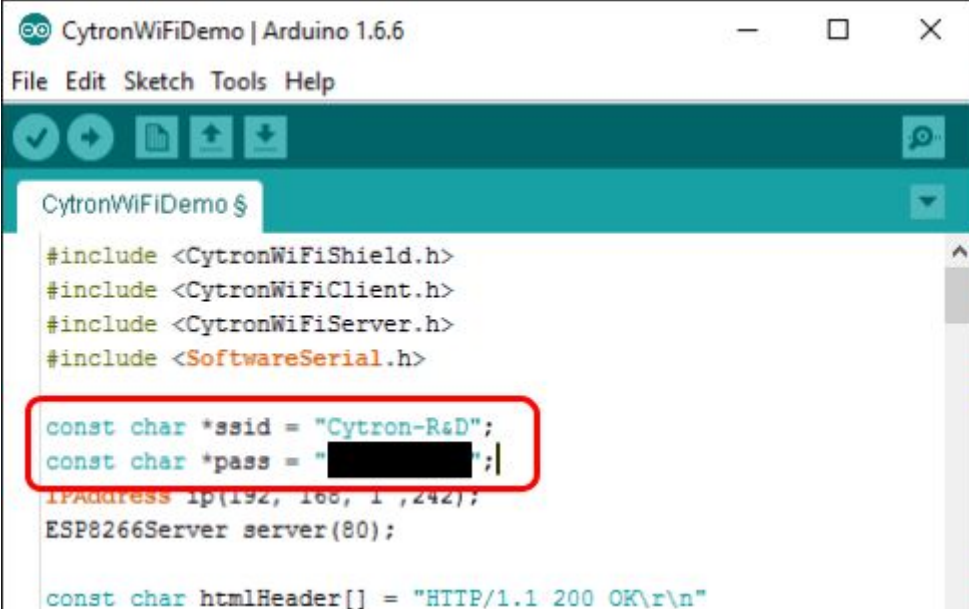
1. Stack ESPWiFi Shield onto compatible Arduino Board. For this example, Arduino Uno is used.
2. Select D2 for RX and D3 for TX pin.
3. Make sure the slide switch is switched to **RUN** mode.



4. Download **CytronWiFiShield** library from link provided at product page and extract the files to My Documents -> Arduino -> Libraries.

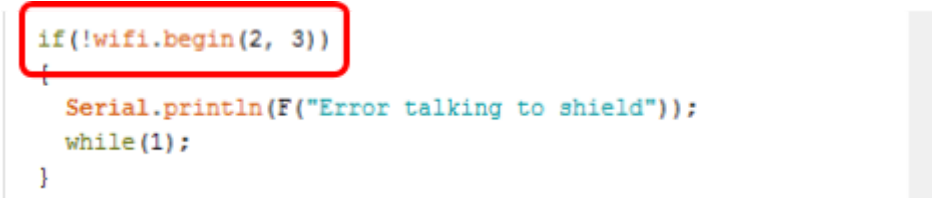
5. Connect Arduino board to PC using USB cable.
6. Open Arduino IDE. Determine which COM port Arduino Uno is connected to and configure the port settings under menu Tools -> Port.
7. Go to File -> Examples -> CytronWiFiShield and open example sketch CytronWiFiDemo.
8. Change ssid from “...” to your network name and “pass” to corresponding password. For example, your network router SSID is WiFly and password is abcd.

```
const char *ssid = "WiFly";
const char *pass = "abcd";
```



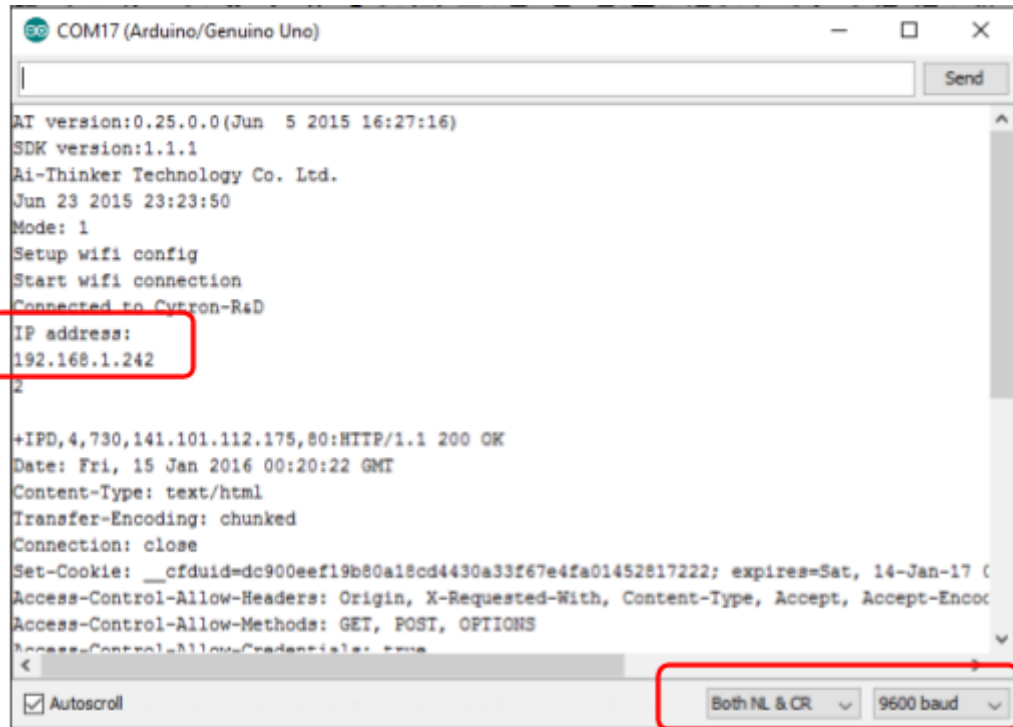
```
CytronWiFiDemo | Arduino 1.6.6
File Edit Sketch Tools Help
CytronWiFiDemo $
#include <CytronWiFiShield.h>
#include <CytronWiFiClient.h>
#include <CytronWiFiServer.h>
#include <SoftwareSerial.h>
const char *ssid = "Cytron-R&D";
const char *pass = "[REDACTED]";
IPAddress ip(192, 168, 1, 242);
ESP8266Server server(80);
const char htmlHeader[] = "HTTP/1.1 200 OK\r\n"
```

9. Check the line `wifi.begin(2, 3)`. 1st argument for this function refers to RX of Arduino and 2nd refers to TX. If D2 is selected for RX and D3 for TX on ESPWiFi Shield, the configuration is correct.

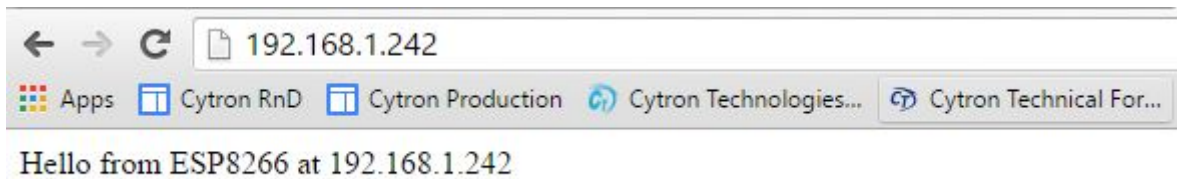


```
if(!wifi.begin(2, 3))
{
  Serial.println(F("Error talking to shield"));
  while(1);
}
```

10. Upload the program to Arduino board.
11. Open Arduino Serial Monitor to view the progress. Setup to 9600 baud.
12. Make sure PC is connected to the same internet network with the ESPWiFi Shield.
13. Observe the IP Address shown in Serial monitor. Enter the IP Address using any web browsers (Google Chrome, Mozilla Firefox, etc.)



14. If the webpage returns what have shown in the following figure, the program is working. For the example here, IP address shown in Serial monitor is 192.168.1.242.

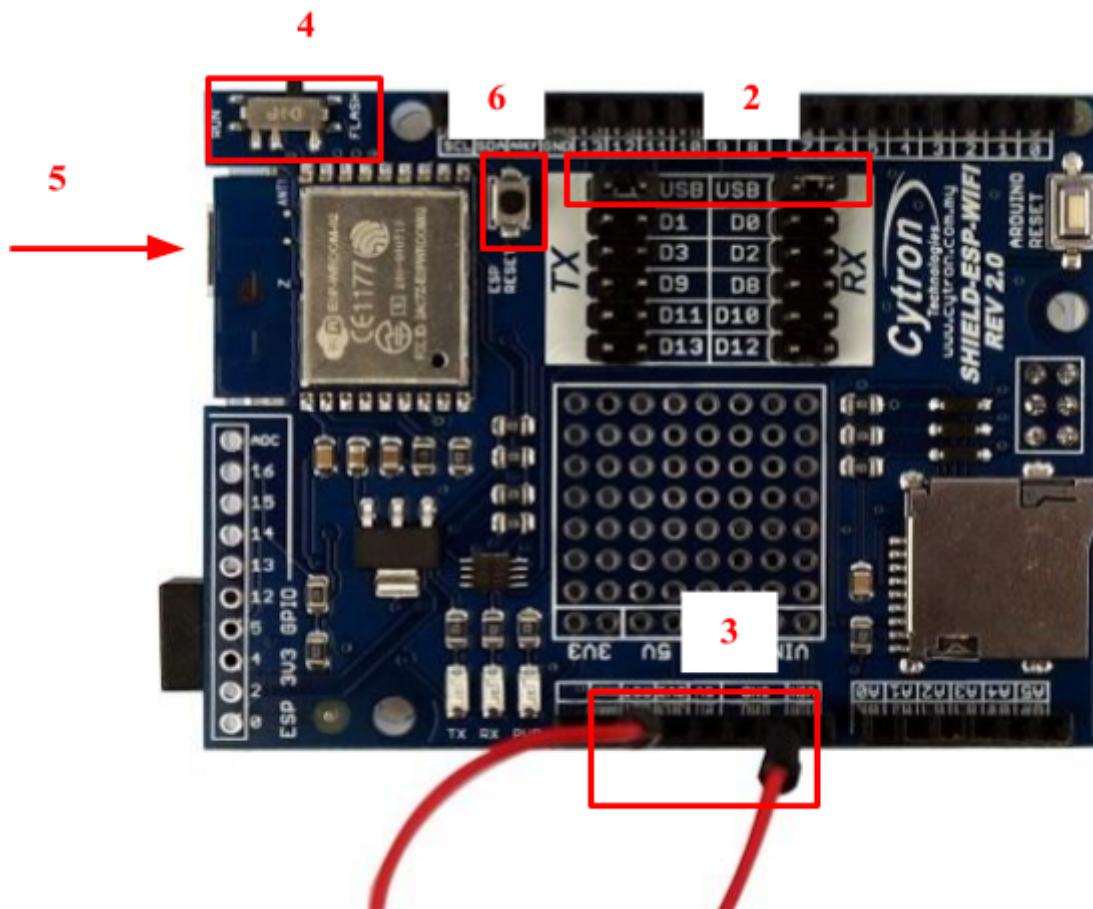


8.0 FIRMWARE INSTALLATION

ESP8266 3V3 GPIO Input and Output function has deprecated with preloaded AT firmware on ESP-WROOM-02 module on ESPWiFi Shield. However, Cytron Technologies offers customised AT firmware which adds the stated capability to the module, allowing user to utilise the 3V3 GPIO fully in the applications. User can follow the guide below to install new AT firmware to the module.

Hardware configuration

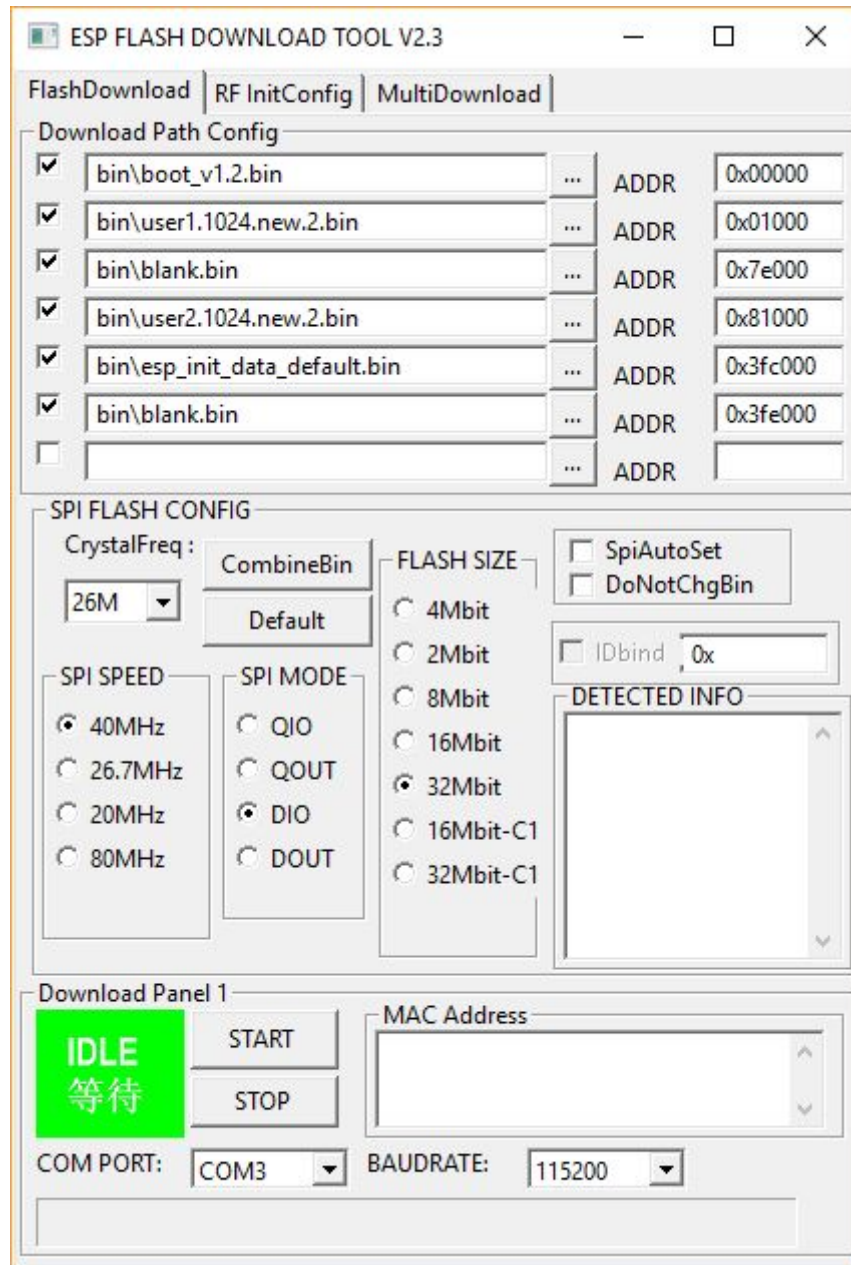
1. Stack the shield onto Arduino compatible board. In this example, Arduino Uno is used.
2. Place both mini jumpers on USB selection.
3. ****IMPORTANT!!** Connect RST to GND using jumper wire to make sure the board reset at all times (Another alternative, upload an empty sketch to Arduino Uno before stacking the shield onto it)
4. Slide the slide switch to FLASH mode.
5. Connect the whole board (Arduino Uno + ESPWiFi shield) to PC via USB cable.
6. Press ESP Reset button (with slide switch switched to FLASH mode) to enable FLASH mode of ESP-WROOM-02 module.



Install AT Firmware

- **Windows (for Windows user only)**

1. Download latest **ESPWIFI_Shield_Firmware** from [link](#) provided at product page. Extract it. Enter the folder, go to install_firmware -> windows.
2. Open **ESP_DOWNLOAD_TOOL_V2.4.exe**.
3. Choose the COM port Arduino Uno + ESPWiFi shield connecting to. Set the BAUDRATE to 115200.



4. Make sure ESP-WROOM-02 module is in FLASH mode (step 4 and 6 in Hardware Configuration)
5. Click START to install the firmware.

- **Linux (for Linux user only)**

1. Download latest **ESPWIFI_Shield_Firmware** from link provided at product page. Extract it. Enter the folder, go to install_firmware -> linux.
2. Make sure ESP-WROOM-02 module is in FLASH mode (step 4 and 6 in Hardware Configuration)
3. Open terminal here and run following line to start firmware installation.
\$./flash.sh <the port Arduino Uno + ESPWiFi shield connecting to>
E.g \$./flash.sh /dev/ttyACM0

AT Test and some minor configuration

1. Open Arduino Serial Monitor. Make sure the serial port is same as the port Arduino Uno + ESPWiFi shield connecting to.
2. Open and set up Arduino Serial Monitor with settings below.
 - 115200 Baud
 - Both NL & CR
3. Switch the slide switch to RUN mode.
4. Press ESP reset button. If there is a word “ready” shown in monitor, the firmware installation is successful and the firmware is working properly.
5. Enter the command AT+UART=9600,8,1,0,0
6. After the monitor shows “OK” in return, change to 9600 Baud.
7. Test the module with several commands like AT and AT+GMR. If there are replies from these commands, UART setup is successful.
8. The shield is now ready for WiFi library implementation. **Remember to switch TX and RX jumpers to D2 and D3 or other pairs according to your arduino sketch.**

9.0 WARRANTY

- Product warranty is valid for 6 months.
- Warranty only applies to manufacturing defect.
- Damaged caused by misuse is not covered under warranty
- Warranty does not cover freight cost for both ways.

Prepared by
Cytron Technologies Sdn. Bhd.
No. 16, Jalan Industri Ringan Permatang Tinggi 2,
Kawasan Industri Ringan Permatang Tinggi,
14100 Simpang Ampat,
Penang, Malaysia.

Tel: +604 - 504 1878

Fax: +604 - 504 0138

URL: www.cytron.com.my

Email: support@cytron.com.my

sales@cytron.com.my