

POLY-CARBONMONOFLUORIDE LITHIUM BATTERIES (BR SERIES) – CYLINDRICAL TYPE LITHIUM BATTERIES

Ever since their market launch in 1973, our Poly-Carbonmono-fluoride Lithium batteries (BR series) have accumulated a proven track record and figured prominently as the batteries of choice for varied applications. In particular, their long-term operating performance spanning some ten years has made them the ideal power supply for products such as meters or smoke detectors, and they continue to lead the way in applications that demand long-term reliability.



GENERAL SPECIFICATIONS

Model number*1	Electrical Characteristics at 20°C			Dimensions (mm)		Approx. Weight (g)	JIS	IEC
	Nominal Voltage (V)	Nominal Capacity (mAh)*2	Continuous Standard Drain (mA)	Diameter	Height			
BR-1/2AA*3	3	1,000	2.5	14.5	25.5	8.0	-	-
BR-2/3A	3	1,200	2.5	17.0	33.5	13.5	-	BR-17335
BR-2/3AG	3	1,450	2.5	17.0	33.5	13.5	-	BR-17335
BR-A	3	1,800	2.5	17.0	45.5	18.0	-	-
BR-AG	3	2,200	2.5	17.0	45.5	18.0	-	-
BR-C	3	5,000	5.0	26.0	50.5	42.0	-	-

Applications

- Heatcost allocators
- Water & Gas meters
- ETC (Electronic Toll Collection) systems
- Smoke detectors
- Entry Systems
- Data Loggers, etc.

3D ILLUSTRATION

- 1 Positive pole
- 2 Positive pole platform
- 3 Jacket
- 4 Cell can
- 5 Collector
- 6 Negative pole
- 7 Insulator
- 8 Anode (lithium)
- 9 Cathode (carbonmonofluoride)
- 10 Separator
- 11 Gasket

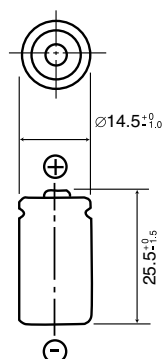


*1 G indicates higher capacity versions.

*2 Based on standard drain and cut off voltage down to 2.0V at 20°C.

*3 This cell is only available with assembled tab.

BR-1/2AA

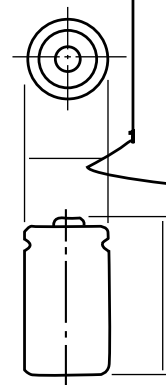


SPECIFICATIONS

Name	BR-1/2AA
Nominal voltage (V)	3
Nominal capacity (mAh)	1,000
Continuous drain (mA)	2.5
Operating temperature (°C)	-40 to +100
Weight (g)	8.0

DISCHARGE TEMPERATURE CHARACTERISTICS

BR-2/3A



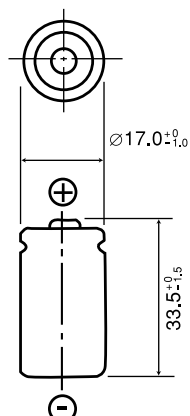
SPECIFICATIONS

Name	BR-2/3A
Nominal voltage (V)	3
Nominal capacity (mAh)	1,200
Continuous drain (mA)	2.5
Operating temperature (°C)	-40 to +85
Weight (g)	13.5

DISCHARGE TEMPERATURE CHARACTERISTICS

OPERATING VOLTAGE VS. DISCHARGE CURRENT*

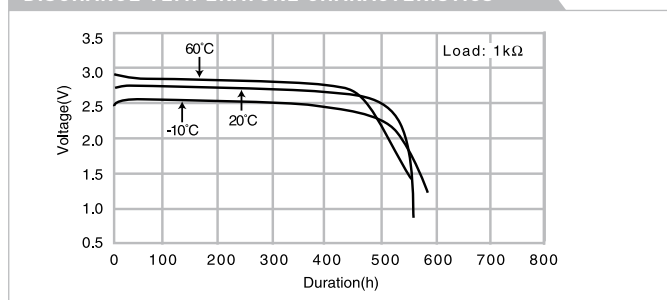
BR-2/3AG



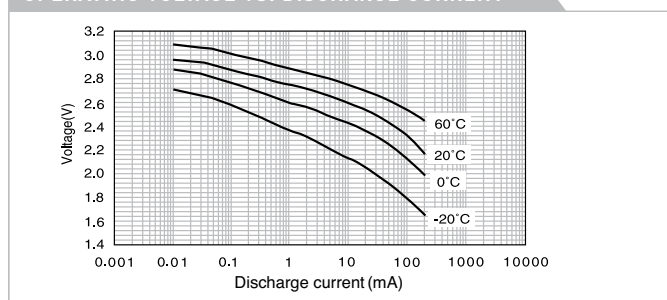
SPECIFICATIONS

Name	BR-2/3AG
Nominal voltage (V)	3
Nominal capacity (mAh)	1,450
Continuous drain (mA)	2.5
Operating temperature (°C)	-40 to +85
Weight (g)	13.5

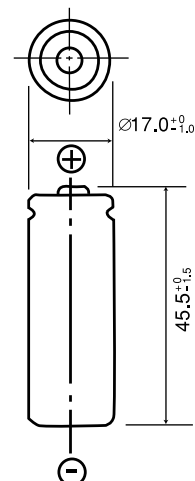
DISCHARGE TEMPERATURE CHARACTERISTICS



OPERATING VOLTAGE VS. DISCHARGE CURRENT*



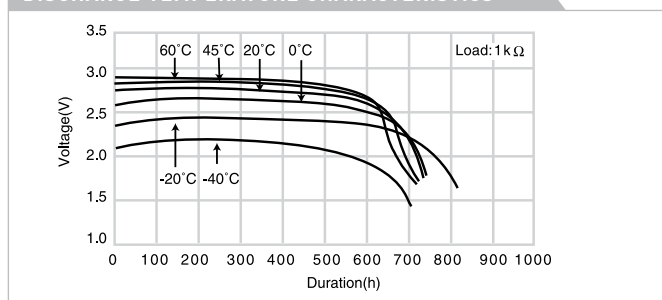
BR-A



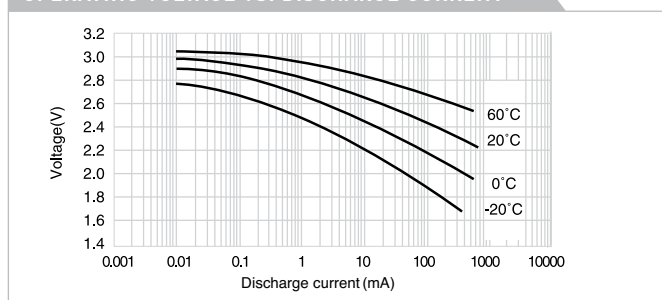
SPECIFICATIONS

Name	BR-A
Nominal voltage (V)	3
Nominal capacity (mAh)	1,800
Continuous drain (mA)	2.5
Operating temperature (°C)	-40 to +85
Weight (g)	18.0

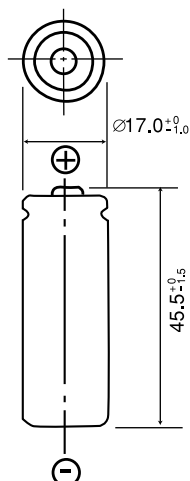
DISCHARGE TEMPERATURE CHARACTERISTICS



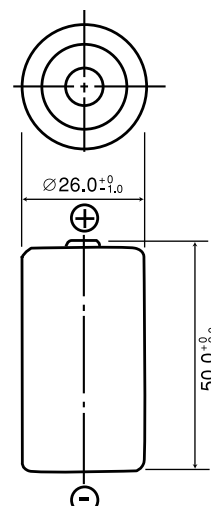
OPERATING VOLTAGE VS. DISCHARGE CURRENT*



BR-AG



BR-C



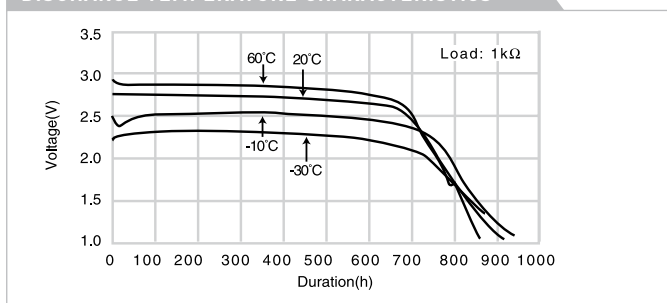
SPECIFICATIONS

Name	BR-AG
Nominal voltage (V)	3
Nominal capacity (mAh)	2,200
Continuous drain (mA)	2.5
Operating temperature (°C)	-40 to +85
Weight (g)	18.0

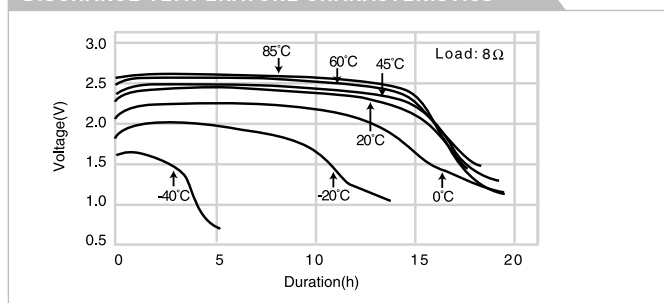
SPECIFICATIONS

Name	BR-C
Nominal voltage (V)	3
Nominal capacity (mAh)	5,000
Continuous drain (mA)	5.0
Operating temperature (°C)	-40 to +85
Weight (g)	42.0

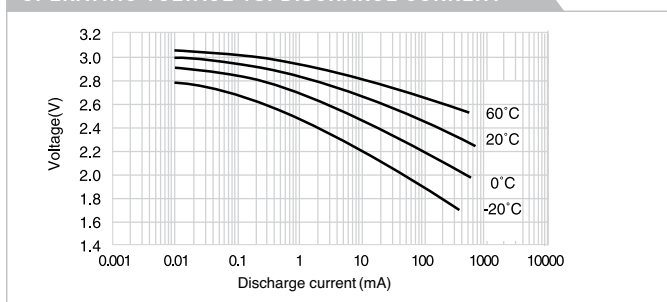
DISCHARGE TEMPERATURE CHARACTERISTICS



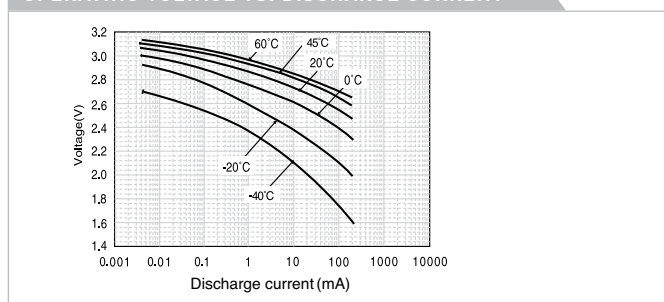
DISCHARGE TEMPERATURE CHARACTERISTICS



OPERATING VOLTAGE VS. DISCHARGE CURRENT*



OPERATING VOLTAGE VS. DISCHARGE CURRENT*



This product does not correspond to the special provision A45 (catalog P81*1) of IATA Dangerous Goods Regulations 47th Edition. Please be aware that this product must follow the Dangerous Goods Regulations transportation method of United Nations Class 9 (Packing Group II) at the time of transportation.

The data in this document are for descriptive purposes only and are not intended to make or imply any guarantee or warranty.

* Voltage at 50% discharge depth.

*1 If you are looking at the web site, please see 'Transporting' of 'Lithium & Micro batteries Data Files are here'.