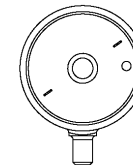
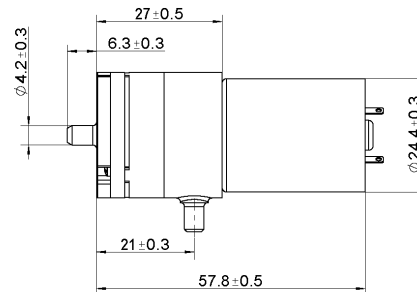
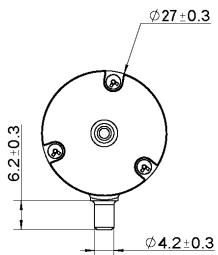
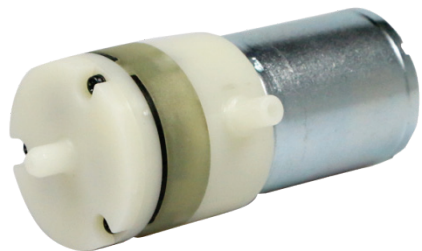
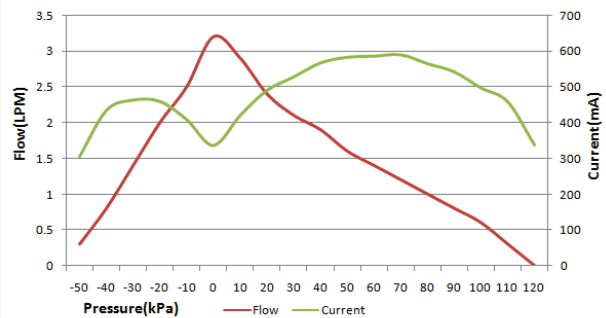


Pump

12V DC 2.8L/m



AJK-B06A2705 Flow(LPM) & Current(mA)



Product Specification

Rated Voltage	Rated Current	Free Flow	Pressure	Noise	Load
DC 6.0 V	< 450 mA	> 2.5 LPM	-50~110 KPa	< 60 dB	Air & Vacuum
DC 12.0 V	< 250 mA	> 2.5 LPM	-50~110 KPa	< 60 dB	Air & Vacuum
DC 24.0 V	< 200 mA	> 2.5 LPM	-50~110 KPa	< 60 dB	Air & Vacuum