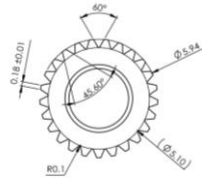
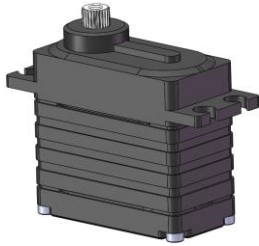
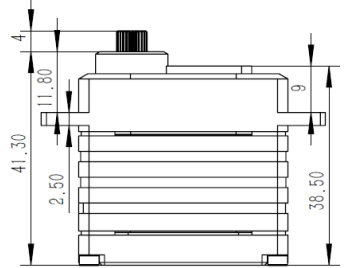
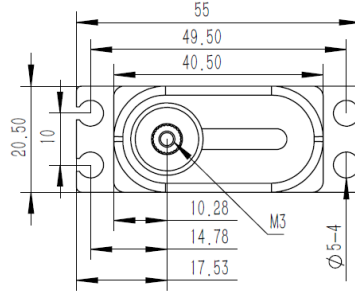


CM5018WP Technical Specification



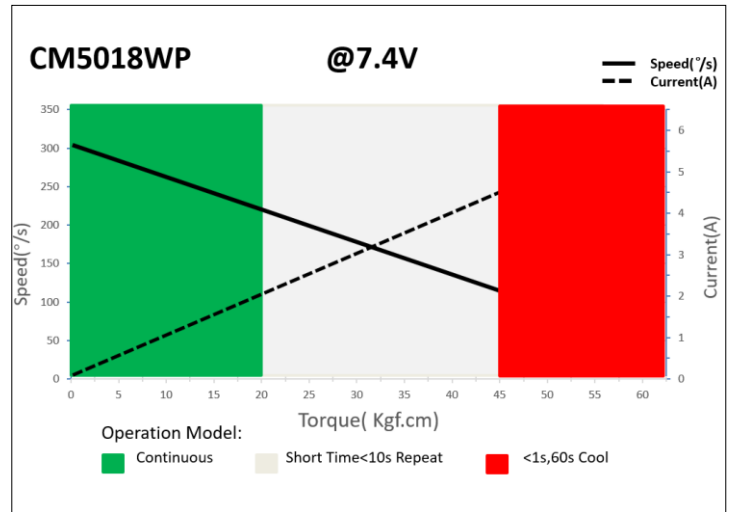
6mm25T Output Shaft Spline



1. Operating Data

Rated Voltage	DC7.4V
Voltage Range	DC4.8V-8.4V
Torque	35Kgf.cm@4.8V
	40Kgf.cm@6.0V
	45Kgf.cm@7.4V
	50Kgf.cm@8.4V
Speed	0.25sec/60°@4.8V
	0.23sec/60°@6.0V
	0.20sec/60°@7.4V
	0.18sec/60°@8.4V
Start Current	4.68A@4.8V
	5.70A@6.0V
	7.25A@7.4V
	8.15A@8.4V
Working Frequency	1520us/333Hz
Default Travel Angle	±50° =100° Total
Temperature Range	-10°C.....+65°C
Soft Start	Programmable
Programmable	Yes
Case Material	Aluminum Alloy
Motor Type	Coreless DC Motor
Gear Set Material	Hardened Steel Gear
Position Sensor	Potentiometer
Ball Bearing	2BB
Waterproof	IP67
Case Dimensions	40.5mm*20.5mm*41.3mm±0.2mm
Weight	80g±10%

2. Performance



3. Command signal PWM Command Interface

Signal Voltage	HIGH: min.3.3V, max.5.0V Low: min.0.0V, max.1.5V
Pulse Lengths	900us-2100us
Pulse Lengths for Position	1000us/1500us/2000us
	-50°/0°/+50°

4. Electrical Connection

Pin Assignment			
<p>3 2 1</p>	1	Orange	Signal PWM Command
	2	Red	DC+ Supply Voltage
	3	Brown	DC- Supply Ground